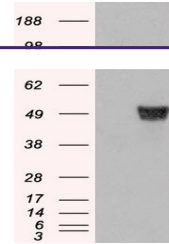


---

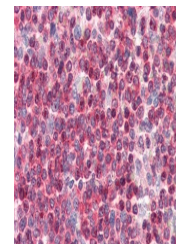
## Product Datasheet

### CORO1A Antibody (orb1247655)

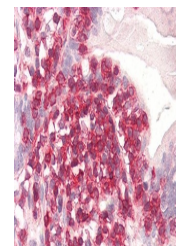
<b>Description</b>	CORO1A Antibody
<b>Species/Host</b>	Goat
<b>Reactivity</b>	Human
<b>Conjugation</b>	Unconjugated
<b>Tested Applications</b>	ELISA, IHC, WB
<b>Immunogen</b>	The immunogen for this antibody is: C-KRLDRLEETVQAK
<b>Target</b>	CORO1A
<b>Preservatives</b>	Supplied at 0.5 mg/ml in Tris saline, 0.02% sodium azide, pH 7.3 with 0.5% bovine serum albumin. Aliquot and store at -20°C. Minimize freezing and thawing.
<b>Form/Appearance</b>	Liquid
<b>Concentration</b>	500 ug/mL
<b>Storage</b>	Aliquot and store at -20°C. Minimize freezing and thawing.
<b>Note</b>	For research use only
<b>Application notes</b>	Peptide ELISA: antibody detection limit dilution 1:16000. Western Blot: Approx 60kDa band observed in Human Lymphoblastoid and Human T cell line MOLT4 lysates (calculated MW of 51.0kDa according to NP_009005.1). In transfected HEK293 transiently expressing CORO1A band of approx. 50kDa is observed. This band is not observed in the non-transfected HEK293. Recommended concentration: 0.3-1ug/ml. Primary incubation was 1 hour. Immunohistochemistry: Paraffin embedded Human Spleen and Small Intestine. Recommended concentration: 3.75ug/ml.
<b>Clonality</b>	Polyclonal
<b>Uniprot ID</b>	<a href="#">P31146</a>
<b>NCBI</b>	<a href="#">NP_009005.1</a>
<b>Dilution Range</b>	Peptide ELISA: antibody detection limit dilution 1:16000. Western Blot: Approx 60kDa band observed in Human Lymphoblastoid and Human T cell line MOLT4 lysates (calculated MW of 51.0kDa according to NP_009005.1). In transfected HEK293 transiently expressing CORO1A band of approx. 50kDa is observed. This band is not observed in the non-transfected HEK293. Recommended concentration: 0.3-1ug/ml. Primary incubation was 1 hour. Immunohistochemistry: Paraffin embedded Human Spleen and Small Intestine. Recommended concentration: 3.75ug/ml.



HEK293 overexpressing CORO1A and probed ...



orb1247655 (3.75 ug/ml) staining of para...



orb1247655 (3.75 ug/ml) staining of para...