
Product Datasheet

CYP26B1 Antibody (orb1247633)

Description

CYP26B1 Antibody

Species/Host

Goat

Reactivity

Human

Conjugation

Unconjugated

Tested

ELISA, IHC

Applications
Immunogen

The immunogen for this antibody is: C-SQARSEDKDGRFH

Target

CYP26B1

Preservatives

Supplied at 0.5 mg/ml in Tris saline, 0.02% sodium azide, pH 7.3 with 0.5% bovine serum albumin. Aliquot and store at -20°C. Minimize freezing and thawing.

Form/Appearance

Liquid

Concentration

500 ug/mL

Storage

Aliquot and store at -20°C. Minimize freezing and thawing.

Note

For research use only

Application notes

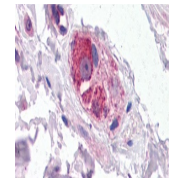
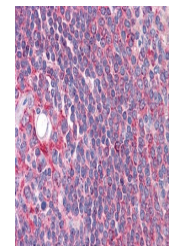
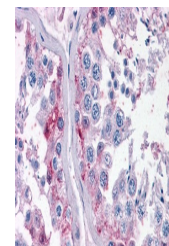
Peptide ELISA: antibody detection limit dilution 1:128000. Western Blot: Preliminary experiments gave an approx 85kDa band in human testis lysates after 0.1ug/ml antibody staining. Please note that currently we cannot find an explanation in the literature for the band we observe given the calculated size of 57.5kDa according to NP_063938.1. The 85kDa band was successfully blocked by incubation with the immunizing peptide. Immunohistochemistry: In paraffin embedded Human Cerebellum shows staining of cell bodies in the Molecular Layer. Recommended concentration: 4-6ug/ml. Paraffin embedded Human Small Intestine, Spleen and Testis. Recommended concentration: 3.75ug/ml.

Clonality

Polyclonal

Uniprot ID
Q9NR63
NCBI
NP_063938.1
Dilution Range

Peptide ELISA: antibody detection limit dilution 1:128000. Western Blot: Preliminary experiments gave an approx 85kDa band in human testis lysates after 0.1ug/ml antibody staining. Please note that currently we cannot find an explanation in the literature for the band we observe given the calculated size of 57.5kDa according to NP_063938.1. The 85kDa band was successfully blocked by incubation with the immunizing peptide. Immunohistochemistry: In paraffin embedded


 orb1247633
(4 ug/ml)
staining of
paraffi...

 orb1247633
(3.75 ug/ml)
staining of
para...

 orb1247633
(3.75 ug/ml)
staining of
para...