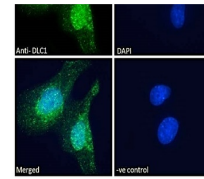
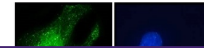
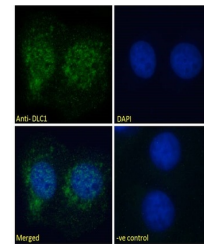

Product Datasheet

DLC1 Antibody (orb1247600)

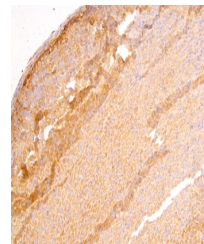
Description	DLC1 Antibody
Species/Host	Goat
Reactivity	Human, Mouse
Conjugation	Unconjugated
Tested Applications	ELISA, IF, IHC
Immunogen	The immunogen for this antibody is: SVAIRKRSWEEHC
Target	DLC1
Preservatives	Supplied at 0.5 mg/ml in Tris saline, 0.02% sodium azide, pH 7.3 with 0.5% bovine serum albumin. Aliquot and store at -20°C. Minimize freezing and thawing.
Form/Appearance	Liquid
Concentration	500 ug/mL
Storage	Aliquot and store at -20°C. Minimize freezing and thawing.
Note	For research use only
Application notes	Peptide ELISA: antibody detection limit dilution 1:64000.Immunohistochemistry:Paraffin embedded Mouse Adrenal Gland. Recommended concentration: 4ug/ml.Immunofluorescence: Expression of the protein seen in the cytoplasm and nucleus of U251 and U2OS cells. Recommended concentration: 10ug/ml.
Clonality	Polyclonal
Uniprot ID	Q96QB1
NCBI	NP_872584.2 , NP_079043.3
Dilution Range	Peptide ELISA: antibody detection limit dilution 1:64000.Immunohistochemistry:Paraffin embedded Mouse Adrenal Gland. Recommended concentration: 4ug/ml.Immunofluorescence: Expression of the protein seen in the cytoplasm and nucleus of U251 and U2OS cells. Recommended concentration: 10ug/ml.
Expiration Date	12 months from date of receipt.



orb1247600
Immunofluorescence analysis o...



orb1247600
Immunofluorescence analysis o...



orb1247600 (4 ug/ml) staining of paraffi...