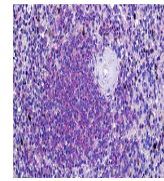
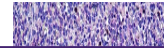
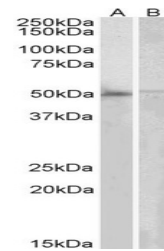

Product Datasheet

DOK3 Antibody (orb1247598)

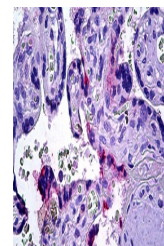
Description	DOK3 Antibody
Species/Host	Goat
Reactivity	Human
Conjugation	Unconjugated
Tested Applications	ELISA, WB
Immunogen	The immunogen for this antibody is: TRERRKGPAPCDRP
Target	DOK3
Preservatives	Supplied at 0.5 mg/ml in Tris saline, 0.02% sodium azide, pH 7.3 with 0.5% bovine serum albumin. Aliquot and store at -20°C. Minimize freezing and thawing.
Form/Appearance	Liquid
Concentration	500 ug/mL
Storage	Aliquot and store at -20°C. Minimize freezing and thawing.
Note	For research use only
Application notes	Peptide ELISA: antibody detection limit dilution 1:128000.Western Blot:Approx 50kDa band observed in Human Bone marrow and Human Peripheral Blood Mononucleocytes lysates (calculated MW of 50.3kDa according to NP_079148.2). Recommended concentration: 2-6ug/ml.
Clonality	Polyclonal
Uniprot ID	Q7L591
NCBI	NP_079148.2
Dilution Range	Peptide ELISA: antibody detection limit dilution 1:128000.Western Blot:Approx 50kDa band observed in Human Bone marrow and Human Peripheral Blood Mononucleocytes lysates (calculated MW of 50.3kDa according to NP_079148.2). Recommended concentration: 2-6ug/ml.
Expiration Date	12 months from date of receipt.



orb1247598
(6.125 ug/ml)
staining of
par...



orb1247598
(2 ug/ml)
staining of
Human B...



orb1247598
(6.125 ug/ml)
staining of
par...