
Product Datasheet

DARC Antibody (orb1247588)

Description

DARC Antibody

Species/Host

Goat

Reactivity

Human

Conjugation

Unconjugated

Tested

ELISA, FC, IHC, WB

Applications
Immunogen

 The immunogen for this antibody is:
HRAELSPSTENSSQLDFED-C

Target

DARC

Preservatives

Supplied at 0.5 mg/ml in Tris saline, 0.02% sodium azide, pH 7.3 with 0.5% bovine serum albumin. Aliquot and store at -20°C. Minimize freezing and thawing.

Form/Appearance

Liquid

Concentration

500 ug/mL

Storage

Aliquot and store at -20°C. Minimize freezing and thawing.

Note

For research use only

Application notes

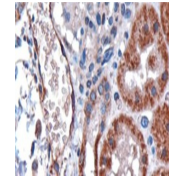
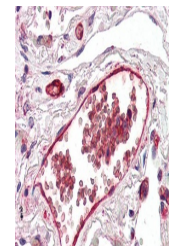
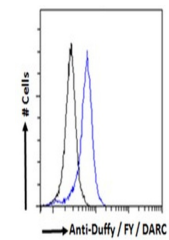
Peptide ELISA: antibody detection limit dilution 1:16000. Western Blot: Approx 37kDa band observed in Human Liver lysates (calculated MW of 35.6kDa according to NP_002027.2). Recommended concentration: 0.3-1ug/ml. Primary incubation was 1 hour. Immunohistochemistry: In paraffin embedded Human Kidney stains epithelial cells of renal tubules and endothelial cells of vessels. The granular staining is compatible with the endoplasmic reticulum association of the protein. Recommended concentration: 3ug/ml. Paraffin embedded Human Lung. Recommended concentration: 5ug/ml. Flow cytometry: Flow cytometric analysis of HEK293 cells. Recommended concentration: 10ug/ml. A customer has reported successful staining of HEK293S-TetR transfected with DARC receptor at a dilution of 1/1000.

Clonality

Polyclonal

Uniprot ID
[Q16570](#)
NCBI
[NP_001116423.1](#), [NP_002027.2](#)
Dilution Range

Peptide ELISA: antibody detection limit dilution 1:16000. Western Blot: Approx 37kDa band observed in Human Liver lysates (calculated MW of 35.6kDa according to NP_002027.2). Recommended concentration: 0.3-1ug/ml. Primary incubation was 1 hour. Immunohistochemistry: In paraffin embedded Human Kidney stains epithelial cells of


 orb1247588
(0.3 ug/ml)
staining of
Human...

 orb1247588
(3 ug/ml)
staining of
paraffi...

 orb1247588
(5 ug/ml)
staining of
paraffi...