


---

## Product Datasheet

### DCTN1 Antibody (orb1247582)

**Description**

DCTN1 Antibody


 250kDa  
150kDa  
100kDa

**Species/Host**

Goat

**Reactivity**


Human, Mouse

**Conjugation**

Unconjugated

**Tested Applications**

ELISA, FC, ICC, IF, IHC, WB

**Applications**

 50kDa  
37kDa  
25kDa  
20kDa  
15kDa  
orb1247582 (1 ug/ml) staining of Human C...

**Immunogen**

The immunogen for this antibody is: C-QEQLHQLHSRLIS

**Target**

DCTN1

**Preservatives**

Supplied at 0.5 mg/ml in Tris saline, 0.02% sodium azide, pH 7.3 with 0.5% bovine serum albumin. Aliquot and store at -20°C. Minimize freezing and thawing.

**Form/Appearance**

Liquid

**Concentration**

500 ug/mL

**Storage**

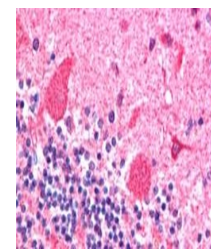
Aliquot and store at -20°C. Minimize freezing and thawing.

**Note**

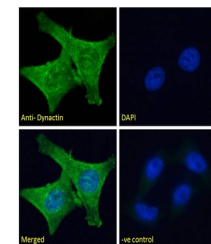
For research use only

**Application notes**

Peptide ELISA: antibody detection limit dilution 1:128000. Western Blot: Approx 150kDa band observed in Human Cerebellum lysates (calculated MW of 142kDa according to NP\_004073.2). Additional bands between approx. 40-70kDa were consistently observed, and all were successfully blocked by incubation with the immunizing peptide. Recommended concentration 1-2ug/ml. Primary incubation 1 hour at room temperature. Preliminary testing was unsuccessful on Rat Brain and Testis for this particular batch. Immunohistochemistry: In paraffin embedded Human Cerebellum shows pixulate staining of cytoplasm in neuronal cells. Recommended concentration: 2-4ug/ml. A customer found positive results in IHC on Human HeLa cells. Immunofluorescence: Strong expression of the protein seen in the cytoplasm of HeLa and U2OS cells. Recommended concentration: 10ug/ml. Immunocytochemistry: A customer found positive results in ICC on Mouse embryonic fibroblasts (MEF cells). Flow Cytometry: Flow cytometric analysis of HeLa cells. Recommended concentration: 10ug/ml.



orb1247582 (2.5 ug/ml) staining of paraf...



orb1247582 Immunofluorescence analysis o...

**Clonality**

Polyclonal

**Uniprot ID**
[Q14203](#)
**NCBI**
[NP\\_001128513.1](#), [NP\\_001128512.1](#), [NP\\_004073.2](#), [NP\\_001177765.1](#), [NP\\_001177766.1](#), [NP\\_075408.1](#)