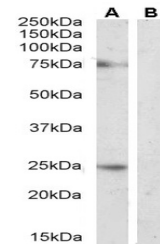


Product Datasheet

ARR3 Antibody (orb1247568)

Description	ARR3 Antibody
Species/Host	Goat
Reactivity	Human
Conjugation	Unconjugated
Tested Applications	ELISA, IHC
Immunogen	The immunogen for this antibody is: C-RKGEEESQKAVE
Target	ARR3
Preservatives	Supplied at 0.5 mg/ml in Tris saline, 0.02% sodium azide, pH 7.3 with 0.5% bovine serum albumin. Aliquot and store at -20°C. Minimize freezing and thawing.
Form/Appearance	Liquid
Concentration	500 ug/mL
Storage	Aliquot and store at -20°C. Minimize freezing and thawing.
Note	For research use only
Application notes	Peptide ELISA: antibody detection limit dilution 1:1000.Immunohistochemistry:In paraffin embedded Human Retina shows staining of the outer segments of rod receptor cells. Recommended concentration: 2-4ug/ml.
Clonality	Polyclonal
Uniprot ID	P36575
NCBI	NP_004303.2
Dilution Range	Peptide ELISA: antibody detection limit dilution 1:1000.Immunohistochemistry:In paraffin embedded Human Retina shows staining of the outer segments of rod receptor cells. Recommended concentration: 2-4ug/ml.
Expiration Date	12 months from date of receipt.



orb1247568
(4 ug/ml)
staining of
paraffi...