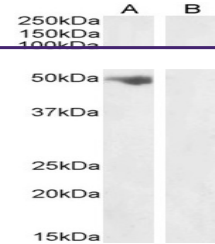
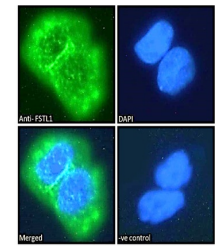

Product Datasheet

FSTL1 Antibody (orb1247473)

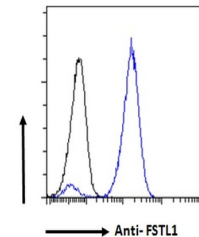
Description	FSTL1 Antibody
Species/Host	Goat
Reactivity	Human
Conjugation	Unconjugated
Tested Applications	ELISA, FC, IF, WB
Immunogen	The immunogen for this antibody is: C-TAEKTKRVSTKEI
Target	FSTL1
Preservatives	Supplied at 0.5 mg/ml in Tris saline, 0.02% sodium azide, pH 7.3 with 0.5% bovine serum albumin. Aliquot and store at -20°C. Minimize freezing and thawing.
Form/Appearance	Liquid
Concentration	500 ug/mL
Storage	Aliquot and store at -20°C. Minimize freezing and thawing.
Note	For research use only
Application notes	Peptide ELISA: antibody detection limit dilution 1:16000. Western Blot: Approx 50kDa band observed in Human Ovary lysates. (calculated MW of 35.0kDa according to NP_009016.1). This band corresponds to earlier findings with different antibodies from other commercial sources and was successfully blocked by incubation with the immunizing peptide. Recommended concentration: 0.3-1ug/ml. Primary incubation 1 hour at room temperature. Immunofluorescence: Strong expression of the protein seen in the cytoplasm and vesicles of A431 cells. Recommended concentration: 10ug/ml. Flow Cytometry: Flow cytometric analysis of A549 cells. Recommended concentration: 10ug/ml.
Clonality	Polyclonal
Uniprot ID	Q12841
NCBI	NP_009016.1
Dilution Range	Peptide ELISA: antibody detection limit dilution 1:16000. Western Blot: Approx 50kDa band observed in Human Ovary lysates. (calculated MW of 35.0kDa according to NP_009016.1). This band corresponds to earlier findings with different antibodies from other commercial sources and was successfully blocked by incubation with the immunizing peptide. Recommended concentration: 0.3-1ug/ml. Primary incubation 1 hour at



orb1247473 (1 ug/ml) staining of Human O...



orb1247473 Immunofluorescence analysis o...



orb1247473 Flow cytometric analysis of p...