
Product Datasheet

GATA1 Antibody (orb1247458)

Description

GATA1 Antibody

Species/Host

Goat

Reactivity

Human, Mouse

Conjugation

Unconjugated

Tested Applications

ELISA, FC, IF, WB

Immunogen

The immunogen for this antibody is: C-DAEAYRHSPVFQ

Target

GATA1

Preservatives

Supplied at 0.5 mg/ml in Tris saline, 0.02% sodium azide, pH 7.3 with 0.5% bovine serum albumin. Aliquot and store at -20°C. Minimize freezing and thawing.

Form/Appearance

Liquid

Concentration

500 ug/mL

Storage

Aliquot and store at -20°C. Minimize freezing and thawing.

Note

For research use only

Application notes

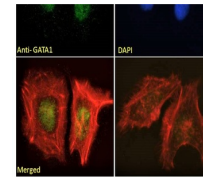
Peptide ELISA: antibody detection limit dilution 1:16000. Western Blot: Approx 50-55kDa band observed in nuclear lysates of cell line K562 (calculated MW of 42.8kDa according to NP_002040.1). The observed molecular weight corresponds to different antibodies from other commercial sources. Recommended concentration: 0.3-1ug/ml. Primary incubation 1 hour at room temperature. Negative Control: Human Hippocampus lysate. Immunofluorescence: Strong expression of the protein seen in the nuclei of HeLa and NIH3T3 cells. Recommended concentration: 10ug/ml. Flow Cytometry: Flow cytometric analysis of K562 cells. Recommended concentration: 10ug/ml.

Clonality

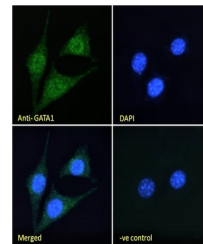
Polyclonal

Uniprot ID
P15976
NCBI
NP_002040.1
Dilution Range

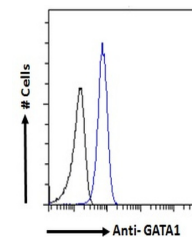
Peptide ELISA: antibody detection limit dilution 1:16000. Western Blot: Approx 50-55kDa band observed in nuclear lysates of cell line K562 (calculated MW of 42.8kDa according to NP_002040.1). The observed molecular weight corresponds to different antibodies from other commercial sources. Recommended concentration: 0.3-1ug/ml. Primary incubation 1 hour at room temperature. Negative Control: Human



orb1247458 (1 ug/ml) staining of K562 nu...



orb1247458 Immunofluorescence analysis o...



orb1247458 Immunofluorescence analysis o...