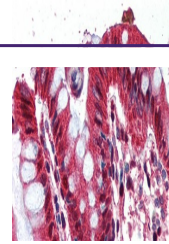


---

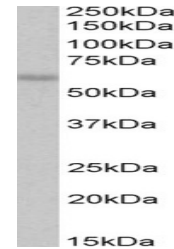
## Product Datasheet

### GHRL Antibody (orb1247448)

<b>Description</b>	GHRL Antibody	
<b>Species/Host</b>	Goat	
<b>Reactivity</b>	Human, Rat	
<b>Conjugation</b>	Unconjugated	
<b>Tested Applications</b>	ELISA, ICC, IHC	
<b>Immunogen</b>	The immunogen for this antibody is: C-QDILWEEAKEAPADK	
<b>Target</b>	GHRL	
<b>Preservatives</b>	Supplied at 0.5 mg/ml in Tris saline, 0.02% sodium azide, pH 7.3 with 0.5% bovine serum albumin. Aliquot and store at -20°C. Minimize freezing and thawing.	
<b>Form/Appearance</b>	Liquid	
<b>Concentration</b>	500 ug/mL	
<b>Storage</b>	Aliquot and store at -20°C. Minimize freezing and thawing.	
<b>Note</b>	For research use only	
<b>Application notes</b>	<p>Peptide ELISA: antibody detection limit dilution 1:8000. Immunohistochemistry: In paraffin embedded Human Placenta shows staining of trophoblast cytoplasm. Recommended concentration: 2-5ug/ml. Paraffin embedded Human Colon. Recommended concentration: 2ug/ml.</p>	
<b>Clonality</b>	Polyclonal	
<b>Uniprot ID</b>	<a href="#">Q9UBU3</a>	
<b>NCBI</b>	<a href="#">NP_001128413.1</a> , <a href="#">NP_001128417.1</a> , <a href="#">NP_001128418.1</a> , <a href="#">NP_057446.1</a> , <a href="#">NP_001128416.1</a>	
<b>Dilution Range</b>	<p>Peptide ELISA: antibody detection limit dilution 1:8000. Immunohistochemistry: In paraffin embedded Human Placenta shows staining of trophoblast cytoplasm. Recommended concentration: 2-5ug/ml. Paraffin embedded Human Colon. Recommended concentration: 2ug/ml.</p>	
<b>Expiration Date</b>	12 months from date of receipt.	



orb1247448  
(2 ug/ml)  
staining of  
paraffi...



orb1247448  
(2 ug/ml)  
staining of  
paraffi...