
Product Datasheet

GOLGA3 Antibody (orb1247435)

Description

GOLGA3 Antibody

Species/Host

Goat

Reactivity

Human

Conjugation

Unconjugated

Tested

ELISA, WB

Applications
Immunogen

The immunogen for this antibody is: C-HSQSRASKEGPGE

Target

GOLGA3

Preservatives

Supplied at 0.5 mg/ml in Tris saline, 0.02% sodium azide, pH 7.3 with 0.5% bovine serum albumin. Aliquot and store at -20°C. Minimize freezing and thawing.

Form/Appearance

Liquid

Concentration

500 ug/mL

Storage

Aliquot and store at -20°C. Minimize freezing and thawing.

Note

For research use only

Application notes

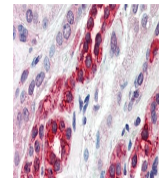
Peptide ELISA: antibody detection limit dilution 1:16000. Western Blot: Approx 170kDa band observed in human HeLa lysates (calculated MW of 167kDa according to NP_005886.2). Recommended concentration: 0.1-0.3ug/ml. An additional band of unknown identity was also consistently observed at approx 25kDa. This band was successfully blocked by incubation with the immunising peptide. We would appreciate any feedback from people in the field - have any results been reported with other antibodies/lysates? Have any further splice variants/modified forms been reported?

Clonality

Polyclonal

Uniprot ID
[Q08378](#)
NCBI
[NP_005886.2](#)
Dilution Range

Peptide ELISA: antibody detection limit dilution 1:16000. Western Blot: Approx 170kDa band observed in human HeLa lysates (calculated MW of 167kDa according to NP_005886.2). Recommended concentration: 0.1-0.3ug/ml. An additional band of unknown identity was also consistently observed at approx 25kDa. This band was successfully blocked by incubation with the immunising peptide. We would appreciate any feedback from people in the field - have any results been reported with other antibodies/lysates? Have any further splice variants/modified forms been reported?


 orb1247435
(0.1 ug/ml)
staining of
Hela ...