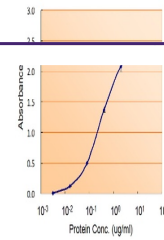


---

## Product Datasheet

### GPX7 Antibody (orb1247421)

<b>Description</b>	GPX7 Antibody
<b>Species/Host</b>	Goat
<b>Reactivity</b>	Human
<b>Conjugation</b>	Unconjugated
<b>Tested Applications</b>	EIA, ELISA, WB
<b>Immunogen</b>	The immunogen for this antibody is: CNQFGQEPDSNK
<b>Target</b>	GPX7
<b>Preservatives</b>	Supplied at 0.5 mg/ml in Tris saline, 0.02% sodium azide, pH 7.3 with 0.5% bovine serum albumin. Aliquot and store at -20°C. Minimize freezing and thawing.
<b>Form/Appearance</b>	Liquid
<b>Concentration</b>	500 ug/mL
<b>Storage</b>	Aliquot and store at -20°C. Minimize freezing and thawing.
<b>Note</b>	For research use only
<b>Application notes</b>	Peptide ELISA: antibody detection limit dilution 1:32000. Western Blot: Approx 20kDa band observed in Human Prostate lysates (calculated MW of 21.0kDa according to NP_056511.2). Recommended concentration: 0.3-1ug/ml. An additional band of unknown identity was also consistently observed at 40kDa. This band was successfully blocked by incubation with the immunising peptide. We would appreciate any feedback from people in the field - have any results been reported with other antibodies/lysates? Have any further splice variants/modified forms been reported? Enzyme immunoassay: Sandwich-type ELISA with increasing amount of recombinant GPX7 captured by a rabbit antibody. Recommended reporter concentration: 5-10ug/ml
<b>Clonality</b>	Polyclonal
<b>Uniprot ID</b>	<a href="#">Q96SL4</a>
<b>NCBI</b>	<a href="#">NP_056511.2</a>
<b>Dilution Range</b>	Peptide ELISA: antibody detection limit dilution 1:32000. Western Blot: Approx 20kDa band observed in Human Prostate lysates (calculated MW of 21.0kDa according to NP_056511.2). Recommended concentration: 0.3-1ug/ml. An additional band of unknown identity was also consistently observed at 40kDa. This band was successfully blocked by incubation with the immunising peptide. We would appreciate any feedback from people in



orb1247421  
(0.3 ug/ml)  
staining of  
Human...



orb1247421  
(5 ug/ml) as  
the reporter  
ant...