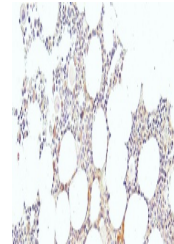


## Product Datasheet

### KLF1 Antibody (orb1247338)

<b>Description</b>	KLF1 Antibody
<b>Species/Host</b>	Goat
<b>Reactivity</b>	Human
<b>Conjugation</b>	Unconjugated
<b>Tested Applications</b>	ELISA, IHC
<b>Immunogen</b>	The immunogen for this antibody is: ATAETALPSISTLT-C
<b>Target</b>	KLF1
<b>Preservatives</b>	Supplied at 0.5 mg/ml in Tris saline, 0.02% sodium azide, pH 7.3 with 0.5% bovine serum albumin. Aliquot and store at -20°C. Minimize freezing and thawing.
<b>Form/Appearance</b>	Liquid
<b>Concentration</b>	500 ug/mL
<b>Storage</b>	Aliquot and store at -20°C. Minimize freezing and thawing.
<b>Note</b>	For research use only
<b>Application notes</b>	Peptide ELISA: antibody detection limit dilution 1:128000.Immunohistochemistry:Paraffin embedded Human Bone Marrow. Staining in hematopoietic and stroma cells. Recommended concentration: 4-6ug/ml.
<b>Clonality</b>	Polyclonal
<b>Uniprot ID</b>	<a href="#">Q13351</a>
<b>NCBI</b>	<a href="#">NP_006554.1</a>
<b>Dilution Range</b>	Peptide ELISA: antibody detection limit dilution 1:128000.Immunohistochemistry:Paraffin embedded Human Bone Marrow. Staining in hematopoietic and stroma cells. Recommended concentration: 4-6ug/ml.
<b>Expiration Date</b>	12 months from date of receipt.



orb1247338 (4 ug/ml) staining of paraffi...



orb1247338 Negative Control showing stai...