
Product Datasheet

KPNA3 Antibody (orb1247327)

Description

KPNA3 Antibody

Species/Host

Goat

Reactivity

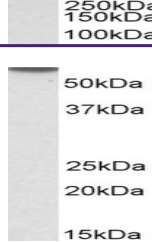
Human

Conjugation

Unconjugated

Tested

ELISA, WB

Applications


orb1247327
(0.1 ug/ml)
staining of
HeLa ...

Immunogen

The immunogen for this antibody is: C-DPTANLQTKEFNF

Target

KPNA3

Preservatives

Supplied at 0.5 mg/ml in Tris saline, 0.02% sodium azide, pH 7.3 with 0.5% bovine serum albumin. Aliquot and store at -20°C. Minimize freezing and thawing.

Form/Appearance

Liquid

Concentration

500 ug/mL

Storage

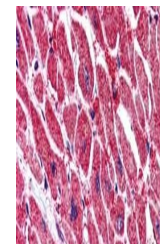
Aliquot and store at -20°C. Minimize freezing and thawing.

Note

For research use only

Application notes

Peptide ELISA: antibody detection limit dilution 1:128000. Western Blot: Approx 60kDa band observed in lysates of cell line HeLa (calculated MW of 57.8kDa according to NP_002258.2). Recommended concentration: 0.1-0.3ug/ml. Primary incubation was 1 hour.



orb1247327
(5 ug/ml)
staining of
paraffi...

Clonality

Polyclonal

Uniprot ID
[O00505](#)
NCBI
[NP_002258.2](#)
Dilution Range

Peptide ELISA: antibody detection limit dilution 1:128000. Western Blot: Approx 60kDa band observed in lysates of cell line HeLa (calculated MW of 57.8kDa according to NP_002258.2). Recommended concentration: 0.1-0.3ug/ml. Primary incubation was 1 hour.

Expiration Date

12 months from date of receipt.