

---

## Product Datasheet

### NR1H2 Antibody (orb1247300)

**Description**

NR1H2 Antibody

**Species/Host**

Goat

**Reactivity**

Human

**Conjugation**

Unconjugated

**Tested Applications**

ELISA, FC, IF

**Immunogen**

The immunogen for this antibody is: SSPTTSSLDTPLPGC

**Target**

NR1H2

**Preservatives**

Supplied at 0.5 mg/ml in Tris saline, 0.02% sodium azide, pH 7.3 with 0.5% bovine serum albumin. Aliquot and store at -20°C. Minimize freezing and thawing.

**Form/Appearance**

Liquid

**Concentration**

500 ug/mL

**Storage**

Aliquot and store at -20°C. Minimize freezing and thawing.

**Note**

For research use only

**Application notes**

Peptide ELISA: antibody detection limit dilution 1:128000. Immunofluorescence: Strong expression of the protein seen in the nuclei of U2OS cells. Recommended concentration: 10ug/ml. Flow Cytometry: Flow cytometric analysis of HeLa cells. Recommended concentration: 10ug/ml.

**Clonality**

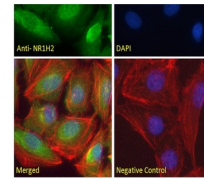
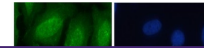
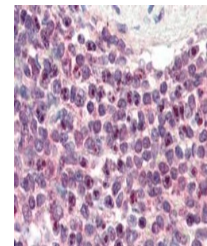
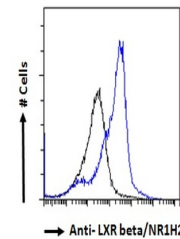
Polyclonal

**Uniprot ID**
[P55055](#)
**NCBI**
[NP\\_009052.3](#)
**Dilution Range**

Peptide ELISA: antibody detection limit dilution 1:128000. Immunofluorescence: Strong expression of the protein seen in the nuclei of U2OS cells. Recommended concentration: 10ug/ml. Flow Cytometry: Flow cytometric analysis of HeLa cells. Recommended concentration: 10ug/ml.

**Expiration Date**

12 months from date of receipt.


 orb1247300  
Immunofluorescence  
analysis o...

 orb1247300 (3  
ug/ml) staining of  
paraffi...

 orb1247300 Flow  
cytometric analysis  
of p...