
Product Datasheet

MAP3K7IP3 Antibody (orb1247286)

Description

MAP3K7IP3 Antibody

Species/Host

Goat

Reactivity

Human

Conjugation

Unconjugated

Tested

ELISA, IHC

Applications
Immunogen

The immunogen for this antibody is: C-HSPDDNRMNRN

Target

MAP3K7IP3

Preservatives

Supplied at 0.5 mg/ml in Tris saline, 0.02% sodium azide, pH 7.3 with 0.5% bovine serum albumin. Aliquot and store at -20°C. Minimize freezing and thawing.

Form/Appearance

Liquid

Concentration

500 ug/mL

Storage

Aliquot and store at -20°C. Minimize freezing and thawing.

Note

For research use only

Application notes

Peptide ELISA: antibody detection limit dilution 1:32000. Western Blot: Preliminary experiments gave an approx 100kDa band in Human Kidney lysates after 0.5ug/ml antibody staining. Please note that currently we cannot find an explanation in the literature for the band we observe given the calculated size of 78.7kDa according to NP_690000.2. The 100kDa band was successfully blocked by incubation with the immunizing peptide. Immunohistochemistry: Paraffin embedded Human Thyroid. Recommended concentration: 3.75ug/ml.

Clonality

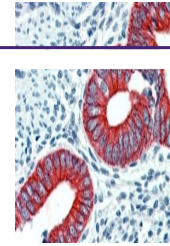
Polyclonal

Uniprot ID
[Q8N5C8](#)
NCBI
[NP_690000.2](#)
Dilution Range

Peptide ELISA: antibody detection limit dilution 1:32000. Western Blot: Preliminary experiments gave an approx 100kDa band in Human Kidney lysates after 0.5ug/ml antibody staining. Please note that currently we cannot find an explanation in the literature for the band we observe given the calculated size of 78.7kDa according to NP_690000.2. The 100kDa band was successfully blocked by incubation with the immunizing peptide. Immunohistochemistry: Paraffin embedded Human Thyroid. Recommended concentration: 3.75ug/ml.

Expiration Date

12 months from date of receipt.


 orb1247286
(3.75 ug/ml)
staining of
para...