
Product Datasheet

SERPINI2 Antibody (orb1247269)

Description

SERPINI2 Antibody

Species/Host

Goat

Reactivity

Human

Conjugation

Unconjugated

Tested

ELISA, IHC, WB

Applications
Immunogen

The immunogen for this antibody is: C-KGDWKQKFRKEDTQ

Target

SERPINI2

Preservatives

Supplied at 0.5 mg/ml in Tris saline, 0.02% sodium azide, pH 7.3 with 0.5% bovine serum albumin. Aliquot and store at -20°C. Minimize freezing and thawing.

Form/Appearance

Liquid

Concentration

500 ug/mL

Storage

Aliquot and store at -20°C. Minimize freezing and thawing.

Note

For research use only

Application notes

Peptide ELISA: antibody detection limit dilution 1:64000. Western Blot: Approx 40kDa band observed in Human Pancreas lysates (calculated MW of 46.1kDa according to NP_006208.1 and 47.4kDa according to NP_001012303.1). Recommended concentration: 0.3-1ug/ml. Immunohistochemistry: In paraffin embedded Human Pancreas, shows cytoplasmic staining of acinar cells and of rare cells in the islets of Langerhans. Recommended concentration, 3ug/ml.

Clonality

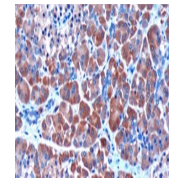
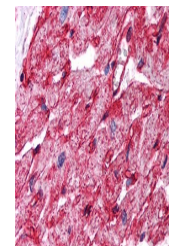
Polyclonal

Uniprot ID
[O75830](#)
NCBI
[NP_006208.1](#), [NP_001012303.1](#)
Dilution Range

Peptide ELISA: antibody detection limit dilution 1:64000. Western Blot: Approx 40kDa band observed in Human Pancreas lysates (calculated MW of 46.1kDa according to NP_006208.1 and 47.4kDa according to NP_001012303.1). Recommended concentration: 0.3-1ug/ml. Immunohistochemistry: In paraffin embedded Human Pancreas, shows cytoplasmic staining of acinar cells and of rare cells in the islets of Langerhans. Recommended concentration, 3ug/ml.

Expiration Date

12 months from date of receipt.


 orb1247269
(0.3 ug/ml)
staining of
Human...

 orb1247269
(3 ug/ml)
staining of
paraffi...