

Product Datasheet

MLL4 Antibody (orb1247262)

Description

MLL4 Antibody

Species/Host

Goat

Reactivity

Human

Conjugation

Unconjugated

Tested

ELISA, IHC

Applications
Immunogen

The immunogen for this antibody is: CNCGAKRCRRFLN

Target

MLL4

Preservatives

Supplied at 0.5 mg/ml in Tris saline, 0.02% sodium azide, pH 7.3 with 0.5% bovine serum albumin. Aliquot and store at -20°C. Minimize freezing and thawing.

Form/Appearance

Liquid

Concentration

500 ug/mL

Storage

Aliquot and store at -20°C. Minimize freezing and thawing.

Note

For research use only

Application notes

Peptide ELISA: antibody detection limit dilution 1:128000. Western Blot: Using our routine western blotting protocol we would not expect to reliably detect proteins larger than 250kDa (calculated MWt. of approx. 294kDa according to NP_055542.1). Immunohistochemistry: Positive staining seen in paraffin embedded Human Testis and Human Brain Cortex. Recommended concentration: 5-10ug/ml.

Clonality

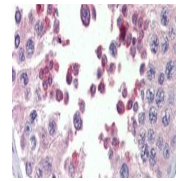
Polyclonal

Uniprot ID
[Q9UMN6](#)
NCBI
[NP_055542.1](#)
Dilution Range

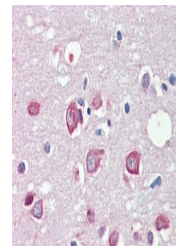
Peptide ELISA: antibody detection limit dilution 1:128000. Western Blot: Using our routine western blotting protocol we would not expect to reliably detect proteins larger than 250kDa (calculated MWt. of approx. 294kDa according to NP_055542.1). Immunohistochemistry: Positive staining seen in paraffin embedded Human Testis and Human Brain Cortex. Recommended concentration: 5-10ug/ml.

Expiration Date

12 months from date of receipt.



orb1247262 (5 ug/ml) staining of paraffi...



orb1247262 (5 ug/ml) staining of paraffi...