
Product Datasheet

MSX1 Antibody (orb1247248)

Description

MSX1 Antibody

Species/Host

Goat

Reactivity

Human

Conjugation

Unconjugated

Tested

ELISA, IHC, WB

Applications
Immunogen

The immunogen for this antibody is: TSLPLGVKVEDS-C

Target

MSX1

Preservatives

Supplied at 0.5 mg/ml in Tris saline, 0.02% sodium azide, pH 7.3 with 0.5% bovine serum albumin. Aliquot and store at -20°C. Minimize freezing and thawing.

Form/Appearance

Liquid

Concentration

500 ug/mL

Storage

Aliquot and store at -20°C. Minimize freezing and thawing.

Note

For research use only

Application notes

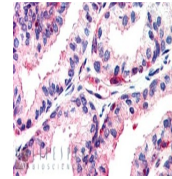
Peptide ELISA: antibody detection limit dilution 1:64000. Western Blot: Preliminary experiments gave an approx. 55-60kDa band in Human Muscle and Heart lysates at 1ug/ml. Further, this band was successfully blocked by incubation with the immunising peptide. Please note that currently we cannot find an explanation in the literature for the band we observe given the predicted size of approx. 31.4kDa according to Human NP_002439.2. We would appreciate any feedback from people in the field - have any results been reported with other antibodies/lysates? Have any further splice variants/modified forms been reported? Immunohistochemistry: In paraffin embedded Human Prostate shows staining of nucleoli in a few epithelial cells. Recommended concentration, 2-4ug/ml. Data obtained from a previous batch (different goat).

Clonality

Polyclonal

Uniprot ID
P28360
NCBI
NP_002439.2
Dilution Range

Peptide ELISA: antibody detection limit dilution 1:64000. Western Blot: Preliminary experiments gave an approx. 55-60kDa band in Human Muscle and Heart lysates at 1ug/ml. Further, this band was successfully blocked by incubation with the immunising peptide. Please note that currently we cannot find an explanation in the literature for the band we observe given the predicted size of approx.


 orb1247248
(2.5 ug/ml)
staining of
paraf...

 orb1247248
(0.3 ug/ml)
staining of
Human...