
Product Datasheet

NHEJ1 Antibody (orb1247201)

Description

NHEJ1 Antibody

Species/Host

Goat

Reactivity

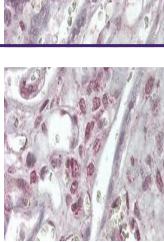
Human

Conjugation

Unconjugated

Tested

ELISA, IHC, WB

Applications


orb1247201
(0.1 ug/ml)
staining of
Human...

Immunogen

The immunogen for this antibody is: C-QRPQLSKVKRKKPR

Target

NHEJ1

Preservatives

Supplied at 0.5 mg/ml in Tris saline, 0.02% sodium azide, pH 7.3 with 0.5% bovine serum albumin. Aliquot and store at -20°C. Minimize freezing and thawing.

Form/Appearance

Liquid

Concentration

500 ug/mL

Storage

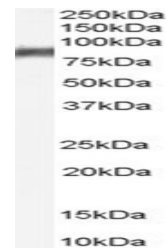
Aliquot and store at -20°C. Minimize freezing and thawing.

Note

For research use only

Application notes

Peptide ELISA: antibody detection limit dilution 1:64000. Western Blot: Approx 38kDa band observed in lysates of Human Skin, Testis and Thyroid gland (calculated size of 33.3kDa according to NP_079058.1). The observed molecular weight corresponds to findings with antibodies from other sources. The 38kDa band was successfully blocked by incubation with the immunizing peptide. Recommended concentration 0.1-0.3ug/ml. Immunohistochemistry: In paraffin embedded Human Placenta shows nuclear staining in trophoblasts. Recommended concentration, 2.5-3.8ug/ml.



orb1247201
(3.8 ug/ml)
staining of
paraf...

Clonality

Polyclonal

Uniprot ID
[Q9H9Q4](#)
NCBI
[NP_079058.1](#)
Dilution Range

Peptide ELISA: antibody detection limit dilution 1:64000. Western Blot: Approx 38kDa band observed in lysates of Human Skin, Testis and Thyroid gland (calculated size of 33.3kDa according to NP_079058.1). The observed molecular weight corresponds to findings with antibodies from other sources. The 38kDa band was successfully blocked by incubation with the immunizing peptide. Recommended concentration 0.1-0.3ug/ml. Immunohistochemistry: In paraffin embedded Human Placenta shows nuclear staining in trophoblasts. Recommended concentration, 2.5-3.8ug/ml.