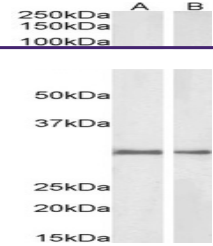
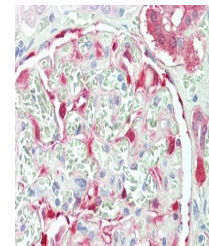

Product Datasheet

NQO1 Antibody (orb1247187)

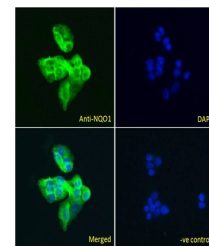
Description	NQO1 Antibody
Species/Host	Goat
Reactivity	Human, Porcine, Rat
Conjugation	Unconjugated
Tested Applications	ELISA, IF, IHC, WB
Immunogen	The immunogen for this antibody is: C-SIPTDNQIKARK
Target	NQO1
Preservatives	Supplied at 0.5 mg/ml in Tris saline, 0.02% sodium azide, pH 7.3 with 0.5% bovine serum albumin. Aliquot and store at -20°C. Minimize freezing and thawing.
Form/Appearance	Liquid
Concentration	500 ug/mL
Storage	Aliquot and store at -20°C. Minimize freezing and thawing.
Note	For research use only
Application notes	Peptide ELISA: antibody detection limit dilution 1:64000. Western Blot: Approx 28kDa band observed in lysates of Glioblastoma cell line U251 and approx 30kDa band observed in Human Kidney and Lung lysates and in Rat and Pig Kidney lysates (calculated MW of 27.3kDa according to Human NP_001020604.1 and 30.9kDa according to Human NP_000894.1, Rat NP_058696.2 and Pig NP_001153085.1). Recommended concentration: 0.03-0.3ug/ml. Primary incubation 1 hour at room temperature. Immunohistochemistry: Paraffin embedded Human Kidney. Recommended concentration: 5ug/ml. Immunofluorescence: Strong expression of the protein seen in the cytoplasm of HepG2 and U251 cells. Recommended concentration: 5-10ug/ml.
Clonality	Polyclonal
Uniprot ID	P15559
NCBI	NP_000894.1 , NP_001020604.1 , NP_001020605.1
Dilution Range	Peptide ELISA: antibody detection limit dilution 1:64000. Western Blot: Approx 28kDa band observed in lysates of Glioblastoma cell line U251 and approx 30kDa band observed in Human Kidney and Lung lysates and in Rat and Pig Kidney lysates (calculated MW of 27.3kDa according to Human NP_001020604.1 and 30.9kDa according to Human NP_000894.1, Rat NP_058696.2 and Pig NP_001153085.1). Recommended concentration: 0.03-



orb1247187 (1 ug/ml) staining of Rat (A)...



orb1247187 (5 ug/ml) staining of paraffi...



orb1247187 Immunofluorescence analysis o...