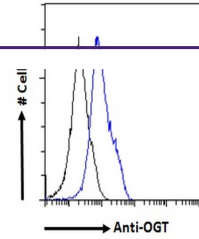


---

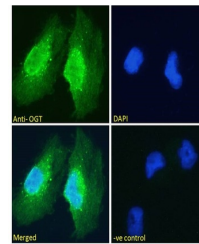
## Product Datasheet

### OGT Antibody (orb1247175)

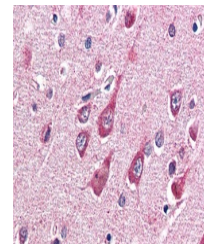
<b>Description</b>	OGT Antibody
<b>Species/Host</b>	Goat
<b>Reactivity</b>	Human, Rat
<b>Conjugation</b>	Unconjugated
<b>Tested Applications</b>	ELISA, FC, IF, IHC, WB
<b>Immunogen</b>	The immunogen for this antibody is: C-YEHPKDLKLSGDR
<b>Target</b>	OGT
<b>Preservatives</b>	Supplied at 0.5 mg/ml in Tris saline, 0.02% sodium azide, pH 7.3 with 0.5% bovine serum albumin. Aliquot and store at -20°C. Minimize freezing and thawing.
<b>Form/Appearance</b>	Liquid
<b>Concentration</b>	500 ug/mL
<b>Storage</b>	Aliquot and store at -20°C. Minimize freezing and thawing.
<b>Note</b>	For research use only
<b>Application notes</b>	<p>Peptide ELISA: antibody detection limit dilution 1:64000. Western Blot: Approx 110kDa band observed in Rat Pancreas lysates calculated MW of 116kDa according to NP_858058.2). An additional band of unknown identity was also consistently observed at 60kDa. This band was successfully blocked by incubation with the immunising peptide. Recommended concentration: 0.05-0.2ug/ml. Primary incubation 1 hour at room temperature. Preliminary testing was unsuccessful on Mouse Brain for this particular batch. Immunohistochemistry: Paraffin embedded Human Brain (Cortex). Recommended concentration: 5ug/ml. Immunofluorescence: Strong expression of the protein seen in the nucleus of HeLa, U2OS and Glioblastoma U251 cells. Recommended concentration: 10ug/ml. Flow Cytometry: Flow cytometric analysis of HEK293 cells. Recommended concentration: 10ug/ml.</p>
<b>Clonality</b>	Polyclonal
<b>Uniprot ID</b>	<a href="#">O15294</a>
<b>NCBI</b>	<a href="#">NP_858059.1</a> , <a href="#">NP_858058.1</a>
<b>Dilution Range</b>	Peptide ELISA: antibody detection limit dilution 1:64000. Western Blot: Approx 110kDa band observed in Rat Pancreas lysates calculated MW of 116kDa according to NP_858058.2). An additional band of unknown identity was also consistently observed at 60kDa. This band was



orb1247175 (0.05 ug/ml) staining of Rat ...



orb1247175 Immunofluorescence analysis o...



orb1247175 Flow cytometric analysis of p...