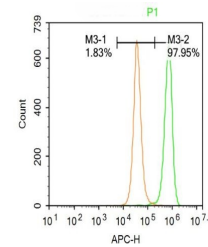


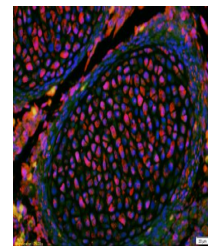
Product Datasheet

KLF2 antibody (PE) (orb124716)

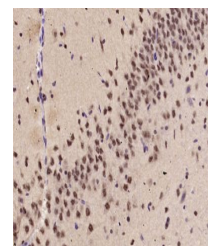
Description	KLF2 antibody (PE)
Species/Host	Rabbit
Reactivity	Human, Mouse, Rat
Conjugation	PE
Tested Applications	FC, IF
Immunogen	KLH conjugated synthetic peptide derived from human KLF2
Target	KLF2
Preservatives	0.01M TBS(pH7.4) with 1% rAlbumin, 0.03% Proclin300 and 50% Glycerol.
Form/Appearance	Liquid
Concentration	1mg/ml
Storage	Shipped at 4°C. Store at -20 °C for one year. Avoid repeated freeze/thaw cycles.
Note	For research use only
Isotype	IgG
Clonality	Polyclonal
Uniprot ID	Q9Y5W3
Dilution Range	Flow-Cyt=1:ug/Test,IF=1:100-500
Expiration Date	12 months from date of receipt.



Flow cytometric analysis of A431 cell US...



Immunofluorescence analysis of Mouse emb...



Immunohistochemical staining of Rat brai...