

---

## Product Datasheet

### HCRTTR1 Antibody (orb1247156)

**Description**

HCRTR1 Antibody

**Species/Host**

Goat

**Reactivity**


Human, Mouse, Rat

**Conjugation**

Unconjugated

**Tested**

ELISA, WB

**Applications**


orb1247156  
(0.5 ug/ml)  
staining of  
Human...

**Immunogen**

The immunogen for this antibody is: C-YNFLSGKFREQFK

**Target**

HCRTR1

**Preservatives**

Supplied at 0.5 mg/ml in Tris saline, 0.02% sodium azide, pH 7.3 with 0.5% bovine serum albumin. Aliquot and store at -20°C. Minimize freezing and thawing.

**Form/Appearance**

Liquid

**Concentration**

500 ug/mL

**Storage**

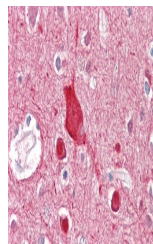
Aliquot and store at -20°C. Minimize freezing and thawing.

**Note**

For research use only

**Application notes**

Peptide ELISA: antibody detection limit dilution 1:32000. Western Blot: Approx 48kDa band observed in Human Brain (Frontal Cortex), Mouse Brain and Rat Brain lysates (calculated MW of 47.5kDa according to NP\_001516.1 and NP\_001517.1). Recommended concentration: 0.3-1ug/ml. Primary incubation was 1 hour.



orb1247156  
(1 ug/ml)  
staining of  
Mouse B...

**Clonality**

Polyclonal

**Uniprot ID**
[O43613](#)
**NCBI**
[NP\\_001516.2](#), [NP\\_001517.2](#)
**Dilution Range**

Peptide ELISA: antibody detection limit dilution 1:32000. Western Blot: Approx 48kDa band observed in Human Brain (Frontal Cortex), Mouse Brain and Rat Brain lysates (calculated MW of 47.5kDa according to NP\_001516.1 and NP\_001517.1). Recommended concentration: 0.3-1ug/ml. Primary incubation was 1 hour.

**Expiration Date**

12 months from date of receipt.