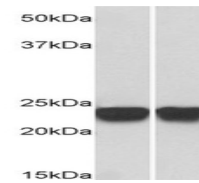
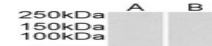
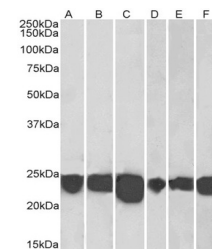

Product Datasheet

PARK7 Antibody (orb1247145)

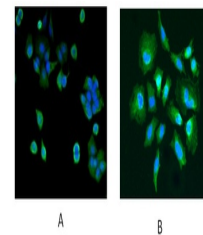
Description	PARK7 Antibody
Species/Host	Goat
Reactivity	Human, Mouse, Rat
Conjugation	Unconjugated
Tested Applications	ELISA, IF, WB
Immunogen	The immunogen for this antibody is: C-AAQVKAPLVLKD
Target	PARK7
Preservatives	Supplied at 0.5 mg/ml in Tris saline, 0.02% sodium azide, pH 7.3 with 0.5% bovine serum albumin. Aliquot and store at -20°C. Minimize freezing and thawing.
Form/Appearance	Liquid
Concentration	500 ug/mL
Storage	Aliquot and store at -20°C. Minimize freezing and thawing.
Note	For research use only
Application notes	Peptide ELISA: antibody detection limit dilution 1:128000. Western Blot: Approx 24kDa band observed in lysates of cell lines HeLa and Jurkat and of Human Brain (Cerebellum, Hippocampus, Frontal Cortex) and rodent Brain lysates (calculated MW of 19.9kDa according to NP_001116849.1 and of NP_009193.2). Recommended concentration: 0.05-0.1ug/ml. Primary incubation was 1 hour. Immunofluorescence: Strong expression of the protein seen around the nucleus. Dividing cells appear to show enhanced expression. Recommended concentration: 5ug/ml.
Clonality	Polyclonal
Uniprot ID	Q99497
NCBI	NP_009193.2
Dilution Range	Peptide ELISA: antibody detection limit dilution 1:128000. Western Blot: Approx 24kDa band observed in lysates of cell lines HeLa and Jurkat and of Human Brain (Cerebellum, Hippocampus, Frontal Cortex) and rodent Brain lysates (calculated MW of 19.9kDa according to NP_001116849.1 and of NP_009193.2). Recommended concentration: 0.05-0.1ug/ml. Primary incubation was 1 hour. Immunofluorescence: Strong expression of the protein seen around the nucleus. Dividing cells appear to show enhanced expression.



orb1247145 (0.001 ug/ml) staining of HeL...



orb1247145 (0.001 ug/ml) staining of Hum...



Immunofluorescence staining of MCF7 (A)

...