

---

## Product Datasheet

### PLXND1 Antibody (orb1247090)

**Description**

PLXND1 Antibody

**Species/Host**

Goat

**Reactivity**

Human

**Conjugation**

Unconjugated

**Tested Applications**

ELISA, FC, IF

**Immunogen**

The immunogen for this antibody is: C-LAEPKKSHRQSH

**Target**

PLXND1

**Preservatives**

Supplied at 0.5 mg/ml in Tris saline, 0.02% sodium azide, pH 7.3 with 0.5% bovine serum albumin. Aliquot and store at -20°C. Minimize freezing and thawing.

**Form/Appearance**

Liquid

**Concentration**

500 ug/mL

**Storage**

Aliquot and store at -20°C. Minimize freezing and thawing.

**Note**

For research use only

**Application notes**

Peptide ELISA: antibody detection limit dilution 1:128000. Immunofluorescence: Strong expression of the protein seen in the cytoplasm of HeLa cells. Recommended concentration: 10ug/ml. Flow Cytometry: Flow cytometric analysis of K562 cells. Recommended concentration: 10ug/ml.

**Clonality**

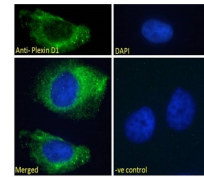
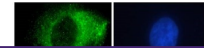
Polyclonal

**Uniprot ID**
[Q9Y4D7](#)
**NCBI**
[NP\\_055918.2](#)
**Dilution Range**

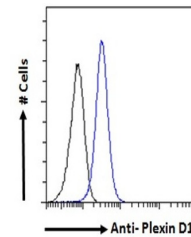
Peptide ELISA: antibody detection limit dilution 1:128000. Immunofluorescence: Strong expression of the protein seen in the cytoplasm of HeLa cells. Recommended concentration: 10ug/ml. Flow Cytometry: Flow cytometric analysis of K562 cells. Recommended concentration: 10ug/ml.

**Expiration Date**

12 months from date of receipt.



orb1247090  
Immunofluorescence  
analysis o...



orb1247090 Flow  
cytometric analysis  
of p...