

---

## Product Datasheet

### PPY Antibody (orb1247079)

**Description**

PPY Antibody


**Species/Host**

Goat

**Reactivity**

Human

**Conjugation**

Unconjugated

**Tested**

ELISA, IHC

**Applications**

 orb1247079  
(3 ug/ml)  
staining of  
paraffi...

**Immunogen**

The immunogen for this antibody is: C-TRPRYGKRHKEDT

**Target**

PPY

**Preservatives**

Supplied at 0.5 mg/ml in Tris saline, 0.02% sodium azide, pH 7.3 with 0.5% bovine serum albumin. Aliquot and store at -20°C. Minimize freezing and thawing.

**Form/Appearance**

Liquid

**Concentration**

500 ug/mL

**Storage**

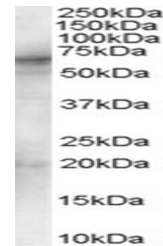
Aliquot and store at -20°C. Minimize freezing and thawing.

**Note**

For research use only

**Application notes**

Peptide ELISA: antibody detection limit dilution 1:32000. Western Blot: Preliminary experiments gave an approx 35-38kDa band in Human Pancreas lysates after 1ug/ml antibody staining. Please note that currently we cannot find an explanation in the literature for the band we observe given the calculated size of 10.5kDa according to NP\_002713.1. The 38kDa band was successfully blocked by incubation with the immunizing peptide. Immunohistochemistry: In paraffin embedded Human Pancreas, shows strong cytoplasmic staining of rare cells located at the periphery of islets of Langerhans. Recommended concentration: 3ug/ml. Paraffin embedded Human Pancreas and Intestine. Recommended concentration: 5ug/ml.


 orb1247079  
(5 ug/ml)  
staining of  
paraffi...

**Clonality**

Polyclonal

**Uniprot ID**
**P01298**
**NCBI**
**NP\_002713.1**
**Dilution Range**

Peptide ELISA: antibody detection limit dilution 1:32000. Western Blot: Preliminary experiments gave an approx 35-38kDa band in Human Pancreas lysates after 1ug/ml antibody staining. Please note that currently we cannot find an explanation in the literature for the band we observe given the calculated size of 10.5kDa according to NP\_002713.1. The 38kDa band was successfully blocked by incubation with the immunizing