

---

## Product Datasheet

### PTBP1 Antibody (orb1247059)

**Description**

PTBP1 Antibody

**Species/Host**

Goat

**Reactivity**


Human, Mouse, Rat

**Conjugation**

Unconjugated

**Tested**

ELISA, IHC, WB

**Applications**


orb1247059  
(0.1 ug/ml)  
staining of  
Human...

**Immunogen**

The immunogen for this antibody is: DGIVPDIAVGTKR-C

**Target**

PTBP1

**Preservatives**

Supplied at 0.5 mg/ml in Tris saline, 0.02% sodium azide, pH 7.3 with 0.5% bovine serum albumin. Aliquot and store at -20°C. Minimize freezing and thawing.

**Form/Appearance**

Liquid

**Concentration**

500 ug/mL

**Storage**

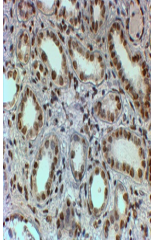
Aliquot and store at -20°C. Minimize freezing and thawing.

**Note**

For research use only

**Application notes**

Peptide ELISA: antibody detection limit dilution 1:32000. Western Blot: Approx 55kDa band observed in Human, Mouse and Rat Ovary lysates and 60kDa band observed in nuclear lysates of cell lines HeLa, HepG2, Jurkat, HEK293 and 3T3N (calculated MW of 57.2kDa according to NP\_114368.1). Recommended concentration: 0.01-0.3ug/ml. Primary incubation was 1 hour. Preliminary testing was unsuccessful on Pig Liver and Ovary for this particular batch. Immunohistochemistry: In paraffin embedded Human Kidney shows nuclear membrane staining in all the convoluted tubules. Recommended concentration: 2-4ug/ml.



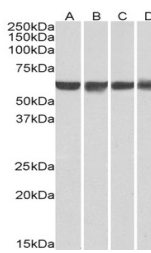
orb1247059  
(2 ug/ml)  
staining of  
paraffi...

**Clonality**

Polyclonal

**Uniprot ID**
[P17225](#)
**NCBI**
[NP\\_002810.1](#), [NP\\_114368.1](#), [NP\\_787041.1](#),  
[NP\\_114367.1](#)
**Dilution Range**

Peptide ELISA: antibody detection limit dilution 1:32000. Western Blot: Approx 55kDa band observed in Human, Mouse and Rat Ovary lysates and 60kDa band observed in nuclear lysates of cell lines HeLa, HepG2, Jurkat, HEK293 and 3T3N (calculated MW of 57.2kDa according to NP\_114368.1). Recommended concentration: 0.01-0.3ug/ml. Primary incubation was 1 hour. Preliminary testing was unsuccessful on Pig Liver and Ovary for this particular batch. Immunohistochemistry: In paraffin embedded Human Kidney shows nuclear membrane staining in all the



orb1247059  
(0.01 ug/ml)  
staining of  
HeLa...