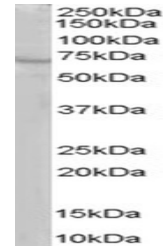


Product Datasheet

RIC8A Antibody (orb1247016)

Description	RIC8A Antibody
Species/Host	Goat
Reactivity	Human
Conjugation	Unconjugated
Tested Applications	ELISA, WB
Immunogen	The immunogen for this antibody is: CLSSDPDSDPD
Target	RIC8A
Preservatives	Supplied at 0.5 mg/ml in Tris saline, 0.02% sodium azide, pH 7.3 with 0.5% bovine serum albumin. Aliquot and store at -20°C. Minimize freezing and thawing.
Form/Appearance	Liquid
Concentration	500 ug/mL
Storage	Aliquot and store at -20°C. Minimize freezing and thawing.
Note	For research use only
Application notes	Peptide ELISA: antibody detection limit dilution 1:32000. Western Blot: Approx 70kDa band observed in human brain lysates (calculated MW of 60.4kDa according to NP_068751.4). Recommended concentration: 1-3ug/ml.
Clonality	Polyclonal
Uniprot ID	Q9NPQ8
NCBI	NP_068751.4
Dilution Range	Peptide ELISA: antibody detection limit dilution 1:32000. Western Blot: Approx 70kDa band observed in human brain lysates (calculated MW of 60.4kDa according to NP_068751.4). Recommended concentration: 1-3ug/ml.
Expiration Date	12 months from date of receipt.



orb1247016 staining (1 ug/ml) of human b...