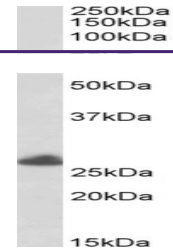

Product Datasheet

TRIM40 Antibody (orb1247006)

Description	TRIM40 Antibody
Species/Host	Goat
Reactivity	Human
Conjugation	Unconjugated
Tested Applications	ELISA, WB
Immunogen	The immunogen for this antibody is: C-GVSELLLQPPQKL
Target	TRIM40
Preservatives	Supplied at 0.5 mg/ml in Tris saline, 0.02% sodium azide, pH 7.3 with 0.5% bovine serum albumin. Aliquot and store at -20°C. Minimize freezing and thawing.
Form/Appearance	Liquid
Concentration	500 ug/mL
Storage	Aliquot and store at -20°C. Minimize freezing and thawing.
Note	For research use only
Application notes	Peptide ELISA: antibody detection limit dilution 1:32000. Western Blot: Approx 26kDa band observed in Human Placenta lysates (calculated MW of 26.1kDa according to NP_619645.1). Recommended concentration: 0.5-2ug/ml.
Clonality	Polyclonal
Uniprot ID	Q6P9F5
NCBI	NP_619645.1
Dilution Range	Peptide ELISA: antibody detection limit dilution 1:32000. Western Blot: Approx 26kDa band observed in Human Placenta lysates (calculated MW of 26.1kDa according to NP_619645.1). Recommended concentration: 0.5-2ug/ml.
Expiration Date	12 months from date of receipt.



orb1247006
(0.5 ug/ml)
staining of
Human...