
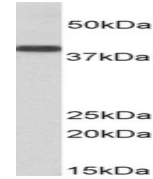

Product Datasheet

SET Antibody (orb1246963)

Description	SET Antibody
Species/Host	Goat
Reactivity	Human
Conjugation	Unconjugated
Tested Applications	ELISA, WB
Immunogen	The immunogen for this antibody is: SAPAAKVSKKELNS-C
Target	SET
Preservatives	Supplied at 0.5 mg/ml in Tris saline, 0.02% sodium azide, pH 7.3 with 0.5% bovine serum albumin. Aliquot and store at -20°C. Minimize freezing and thawing.
Form/Appearance	Liquid
Concentration	500 ug/mL
Storage	Aliquot and store at -20°C. Minimize freezing and thawing.
Note	For research use only
Application notes	Peptide ELISA: antibody detection limit dilution 1:128000. Western Blot: Approx 38kDa band observed in lysates of Human Kidney lysates and of cell lines Daudi and Molt4 (calculated MW of 32.1kDa according to NP_003002.2). Recommended concentration: 0.3-1ug/ml.
Clonality	Polyclonal
Uniprot ID	Q01105
NCBI	NP_003002.2
Dilution Range	Peptide ELISA: antibody detection limit dilution 1:128000. Western Blot: Approx 38kDa band observed in lysates of Human Kidney lysates and of cell lines Daudi and Molt4 (calculated MW of 32.1kDa according to NP_003002.2). Recommended concentration: 0.3-1ug/ml.
Expiration Date	12 months from date of receipt.

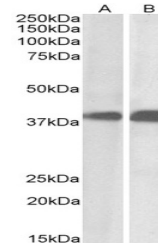


250kDa
150kDa
100kDa



50kDa
37kDa
25kDa
20kDa
15kDa

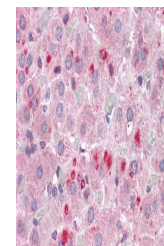
orb1246963
(0.3 ug/ml)
staining of
Human...



250kDa
150kDa
100kDa
75kDa
50kDa
37kDa
25kDa
20kDa
15kDa

A B

orb1246963
(0.01 ug/ml)
staining of
Daud...



orb1246963
(3.75 ug/ml)
staining of
para...