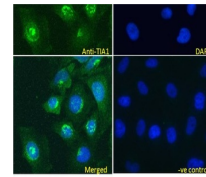
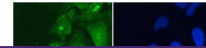
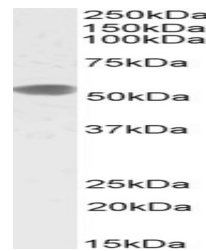

Product Datasheet

TIA1 Antibody (orb1246858)

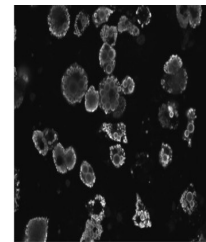
Description	TIA1 Antibody
Species/Host	Goat
Reactivity	Human
Conjugation	Unconjugated
Tested Applications	ELISA, IF, IHC, WB
Immunogen	The immunogen for this antibody is: C-PKSTYESNTKQ
Target	TIA1
Preservatives	Supplied at 0.5 mg/ml in Tris saline, 0.02% sodium azide, pH 7.3 with 0.5% bovine serum albumin. Aliquot and store at -20°C. Minimize freezing and thawing.
Form/Appearance	Liquid
Concentration	500 ug/mL
Storage	Aliquot and store at -20°C. Minimize freezing and thawing.
Note	For research use only
Application notes	Peptide ELISA: antibody detection limit dilution 1:128000. Western Blot: Approx 40kDa band observed in lysates of cell line Jurkat (calculated MW of 41.8kDa according to NP_071320.1). Recommended concentration: 0.1-0.3ug/ml. Primary incubation was 1 hour. An additional band at 80kDa and a very strong 26kDa is also observed. These bands were successfully blocked by incubation with the immunising peptide. Immunohistochemistry: Paraffin embedded Human Thyroid. Recommended concentration: 3.75ug/ml. Immunofluorescence: Strong expression of the protein seen in the nucleus and cytoplasm of HeLa cells. Recommended concentration: 5ug/ml.
Clonality	Polyclonal
Uniprot ID	P31483
NCBI	NP_071505.1 , NP_071320.1
Dilution Range	Peptide ELISA: antibody detection limit dilution 1:128000. Western Blot: Approx 40kDa band observed in lysates of cell line Jurkat (calculated MW of 41.8kDa according to NP_071320.1). Recommended concentration: 0.1-0.3ug/ml. Primary incubation was 1 hour. An additional band at 80kDa and a very strong 26kDa is also observed. These bands were successfully blocked by incubation with the immunising peptide. Immunohistochemistry: Paraffin embedded Human Thyroid. Recommended concentration: 3.75ug/ml. Immunofluorescence: Strong expression of the



orb1246858 (0.1 ug/ml) staining of Jurka...



orb1246858 (3.75 ug/ml) staining of para...



orb1246858 Immunofluorescence analysis o...