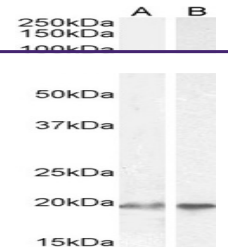
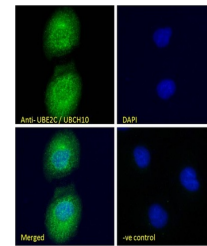

Product Datasheet

UBE2C Antibody (orb1246818)

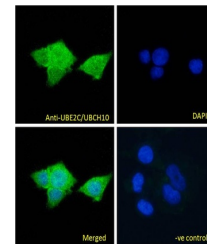
Description	UBE2C Antibody
Species/Host	Goat
Reactivity	Human
Conjugation	Unconjugated
Tested Applications	ELISA, FC, IF, IP, WB
Immunogen	The immunogen for this antibody is: C-QETYSKQVTSQEP
Target	UBE2C
Preservatives	Supplied at 0.5 mg/ml in Tris saline, 0.02% sodium azide, pH 7.3 with 0.5% bovine serum albumin. Aliquot and store at -20°C. Minimize freezing and thawing.
Form/Appearance	Liquid
Concentration	500 ug/mL
Storage	Aliquot and store at -20°C. Minimize freezing and thawing.
Note	For research use only
Application notes	<p>Peptide ELISA: antibody detection limit dilution 1:32000. Western Blot: Approx. 19KDa band observed in lysates of cell lines HeLa and HEK293 (calculated MW of 19.7kDa according to NP_008950.1). Recommended concentration: 1-3ug/ml. Primary incubation 1 hour at room temperature. Immunofluorescence: Strong expression of the protein seen in the cytoplasm of U2OS and MCF7 cells. Recommended concentration: 10ug/ml. Flow Cytometry: Flow cytometric analysis of HeLa cells. Recommended concentration: 10ug/ml. Immunoprecipitation: 20KDa band precipitated from mitotic HeLa whole cell lysates using protein-G dynabeads.</p>
Clonality	Polyclonal
Uniprot ID	O00762
NCBI	NP_861516.1 , NP_008950.1 , NP_861517.1 , NP_001268670.1 , NP_861518.1 , NP_861515.1
Dilution Range	<p>Peptide ELISA: antibody detection limit dilution 1:32000. Western Blot: Approx. 19KDa band observed in lysates of cell lines HeLa and HEK293 (calculated MW of 19.7kDa according to NP_008950.1). Recommended concentration: 1-3ug/ml. Primary incubation 1 hour at room temperature. Immunofluorescence: Strong expression of the protein seen in the cytoplasm of U2OS</p>



orb1246818 (2 ug/ml) staining of HEK293 ...



orb1246818 Immunofluorescence analysis o...



orb1246818 Immunofluorescence analysis o...