

---

## Product Datasheet

### UCP2 Antibody (orb1246814)

**Description**

UCP2 Antibody

**Species/Host**

Goat

**Reactivity**

Human, Mouse, Rat

**Conjugation**

Unconjugated

**Tested Applications**

ELISA, IF, WB

**Immunogen**

The immunogen for this antibody is: C-DSVKQFYTKGSEH

**Target**

UCP2

**Preservatives**

Supplied at 0.5 mg/ml in Tris saline, 0.02% sodium azide, pH 7.3 with 0.5% bovine serum albumin. Aliquot and store at -20°C. Minimize freezing and thawing.

**Form/Appearance**

Liquid

**Concentration**

500 ug/mL

**Storage**

Aliquot and store at -20°C. Minimize freezing and thawing.

**Note**

For research use only

**Application notes**

Peptide ELISA: antibody detection limit dilution 1:128000. Western Blot: Approx 37kDa band observed in Rat Adipose and 28-30kDa in Mouse Spleen lysates (calculated MW of 33.4kDa according to Mouse NP\_035801.3 and 33.4kDa according to Rat NP\_062227.2). Recommended concentration: 0.3-1ug/ml. Primary incubation 1 hour at room temperature. Immunofluorescence: Strong expression of the protein seen in the Mitochondria of MCF7 cells. Recommended concentration: 10ug/ml.

**Clonality**

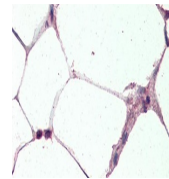
Polyclonal

**Uniprot ID**
[P55851](#)
**NCBI**
[NP\\_003346.2](#)
**Dilution Range**

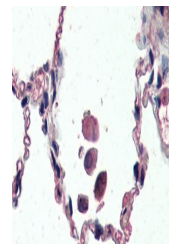
Peptide ELISA: antibody detection limit dilution 1:128000. Western Blot: Approx 37kDa band observed in Rat Adipose and 28-30kDa in Mouse Spleen lysates (calculated MW of 33.4kDa according to Mouse NP\_035801.3 and 33.4kDa according to Rat NP\_062227.2). Recommended concentration: 0.3-1ug/ml. Primary incubation 1 hour at room temperature. Immunofluorescence: Strong expression of the protein seen in the Mitochondria of MCF7 cells. Recommended concentration: 10ug/ml.

**Expiration Date**

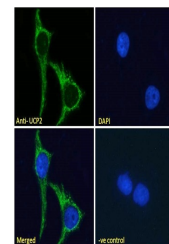
12 months from date of receipt.



orb1246814  
(1 ug/ml)  
staining of Rat  
Adi...



orb1246814  
(3.75 ug/ml)  
staining of  
para...



orb1246814  
(3.75 ug/ml)  
staining of  
para...