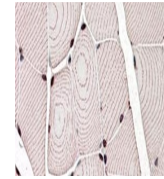
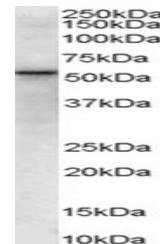

Product Datasheet

LDB3 Antibody (orb1246770)

Description	LDB3 Antibody
Species/Host	Goat
Reactivity	Human
Conjugation	Unconjugated
Tested Applications	ELISA, WB
Immunogen	The immunogen for this antibody is: C-KSQNKPEDEADE
Target	LDB3
Preservatives	Supplied at 0.5 mg/ml in Tris saline, 0.02% sodium azide, pH 7.3 with 0.5% bovine serum albumin. Aliquot and store at -20°C. Minimize freezing and thawing.
Form/Appearance	Liquid
Concentration	500 ug/mL
Storage	Aliquot and store at -20°C. Minimize freezing and thawing.
Note	For research use only
Application notes	Peptide ELISA: antibody detection limit dilution 1:1000. Western Blot: Western Blot experiments gave bands at approx 90kDa and 35kDa in Human Skeletal Muscle lysate after 1ug/ml antibody staining. These bands correspond to earlier findings in literature with different antibodies (Huang et al J Biol Chem. 2003 Feb 28;278(9):7360-5; PMID: 12499364). This protein has a calculated MW of 77.1kDa according to NP_009009.1. Recommended concentration: 0.1-1ug/ml.
Clonality	Polyclonal
Uniprot ID	O75112
NCBI	NP_001073584.1 , NP_001073585.1 , NP_009009.1 , NP_001073583.1
Dilution Range	Peptide ELISA: antibody detection limit dilution 1:1000. Western Blot: Western Blot experiments gave bands at approx 90kDa and 35kDa in Human Skeletal Muscle lysate after 1ug/ml antibody staining. These bands correspond to earlier findings in literature with different antibodies (Huang et al J Biol Chem. 2003 Feb 28;278(9):7360-5; PMID: 12499364). This protein has a calculated MW of 77.1kDa according to NP_009009.1. Recommended concentration: 0.1-1ug/ml.
Expiration Date	12 months from date of receipt.



orb1246770
(0.1 ug/ml)
staining of
Human...



orb1246770
(3.8 ug/ml)
staining of
paraf...