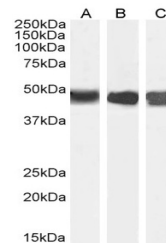

Product Datasheet

ASS1 Antibody (orb1246755)

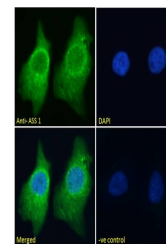
Description	ASS1 Antibody
Species/Host	Goat
Reactivity	Human, Mouse, Rat
Conjugation	Unconjugated
Tested Applications	ELISA, FC, IF, IHC, WB
Immunogen	The immunogen for this antibody is: C-ENPKNQAPPGLYTKTQD
Target	ASS1
Preservatives	Supplied at 0.5 mg/ml in Tris saline, 0.02% sodium azide, pH 7.3 with 0.5% bovine serum albumin. Aliquot and store at -20°C. Minimize freezing and thawing.
Form/Appearance	Liquid
Concentration	500 ug/mL
Storage	Aliquot and store at -20°C. Minimize freezing and thawing.
Note	For research use only
Application notes	<p>Peptide ELISA: antibody detection limit dilution 1:64000. Western Blot: Approx 45kDa band observed in lysates of cell lines A431 and NIH3T3 and approx. 48kDa in Human and Rat Kidney and in Mouse Liver lysates (calculated MW of 46.5kDa according to Human NP_000041.2 and Rat NP_037289.1, and 46.6kDa according to Mouse NP_031520.1). Recommended concentration: 0.03-1ug/ml. Primary incubation 1 hour at room temperature. Immunohistochemistry: In paraffin embedded Human Kidney shows textured cytoplasm staining in PCT. Recommended concentration: 2-4ug/ml. Paraffin embedded Human Liver. Recommended concentration: 2.5ug/ml. Immunofluorescence: Strong expression of the protein seen in the cytoplasm of HeLa cells. Recommended concentration: 10ug/ml. Flow Cytometry: Flow cytometric analysis of A431 cells. Recommended concentration: 10ug/ml.</p>
Clonality	Polyclonal
Uniprot ID	P00966
NCBI	NP_446464.1 , NP_000041.2
Dilution Range	Peptide ELISA: antibody detection limit dilution 1:64000. Western Blot: Approx 45kDa band observed in lysates of cell lines A431 and NIH3T3 and approx. 48kDa in Human and Rat Kidney and in Mouse Liver lysates (calculated MW of 46.5kDa according to Human NP_000041.2 and Rat NP_037289.1, and 46.6kDa according to Mouse NP_031520.1



orb1246755
(2.5 ug/ml)
staining of
paraf...



orb1246755
(2.5 ug/ml)
staining of
paraf...



orb1246755
(0.3 ug/ml)
staining of
A431 ...