

## Product Datasheet

### ASRGL1 Antibody (orb1246753)

**Description**

ASRGL1 Antibody

**Species/Host**

Goat

**Reactivity**

Human

**Conjugation**

Unconjugated

**Tested**

ELISA, WB

**Applications**
**Immunogen**

The immunogen for this antibody is: EKHEKGAQKTDCQ

**Target**

ASRGL1

**Preservatives**

Supplied at 0.5 mg/ml in Tris saline, 0.02% sodium azide, pH 7.3 with 0.5% bovine serum albumin. Aliquot and store at -20°C. Minimize freezing and thawing.

**Form/Appearance**

Liquid

**Concentration**

500 ug/mL

**Storage**

Aliquot and store at -20°C. Minimize freezing and thawing.

**Note**

For research use only

**Application notes**

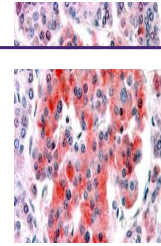
Peptide ELISA: antibody detection limit dilution 1:32000. Western Blot: Approx 34kDa band observed in Human Tosil and lysteof cell line Hela lysates (calculated MW of 32.1kDa according to NP\_001077395.1). Recommended concentration: 1-3ug/ml. An additional band of unknown identity was also consistently observed at 20kDa. This band was successfully blocked by incubation with the immunizing peptide. We would appreciate any feedback from people in the field - have any such results been reported with other antibodies/lysates? Have any further splice variants/modified forms been reported?

**Clonality**

Polyclonal

**Uniprot ID**
[Q7L266](#)
**NCBI**
[NP\\_079356.3](#), [NP\\_001077395.1](#)
**Dilution Range**

Peptide ELISA: antibody detection limit dilution 1:32000. Western Blot: Approx 34kDa band observed in Human Tosil and lysteof cell line Hela lysates (calculated MW of 32.1kDa according to NP\_001077395.1). Recommended concentration: 1-3ug/ml. An additional band of unknown identity was also consistently observed at 20kDa. This band was successfully blocked by incubation with the immunizing peptide. We would appreciate any feedback from people in the field - have any such results been reported with other


 orb1246753  
(0.5 ug/ml)  
staining of  
Human...