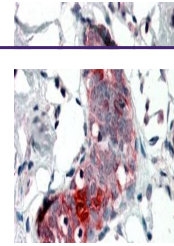

Product Datasheet

LITAF Antibody (orb1246701)

Description	LITAF Antibody
Species/Host	Goat
Reactivity	Human
Conjugation	Unconjugated
Tested Applications	ELISA, IHC
Immunogen	The immunogen for this antibody is: C-PDGKGMNPPSYTQ
Target	LITAF
Preservatives	Supplied at 0.5 mg/ml in Tris saline, 0.02% sodium azide, pH 7.3 with 0.5% bovine serum albumin. Aliquot and store at -20°C. Minimize freezing and thawing.
Form/Appearance	Liquid
Concentration	500 ug/mL
Storage	Aliquot and store at -20°C. Minimize freezing and thawing.
Note	For research use only
Application notes	Peptide ELISA: antibody detection limit dilution 1:8000.Western Blot:Preliminary experiments gave an approx 25kDa band in Human Lymph Node lysates and in lysates of cell lines HeLa and HepG2 after 0.1ug/ml antibody staining. Please note that currently we cannot find an explanation in the literature for the band we observe given the calculated size of 17.1kDa according to NP_004853.2. The 25kDa band was successfully blocked by incubation with the immunizing peptide.Immunohistochemistry:Paraffin embedded Human Thymus. Recommended concentration: 6.5ug/ml.
Clonality	Polyclonal
Uniprot ID	Q99732
NCBI	NP_001129945.1 , NP_004853.2
Dilution Range	Peptide ELISA: antibody detection limit dilution 1:8000.Western Blot:Preliminary experiments gave an approx 25kDa band in Human Lymph Node lysates and in lysates of cell lines HeLa and HepG2 after 0.1ug/ml antibody staining. Please note that currently we cannot find an explanation in the literature for the band we observe given the calculated size of 17.1kDa according to NP_004853.2. The 25kDa band was successfully blocked by incubation with the immunizing peptide.Immunohistochemistry:Paraffin embedded Human Thymus. Recommended concentration: 6.5ug/ml.
Expiration Date	12 months from date of receipt.



orb1246701
(6.5 ug/ml)
staining of paraf...