
Product Datasheet

APOBEC3G Antibody (orb1246654)

Description

APOBEC3G Antibody

Species/Host

Goat

Reactivity

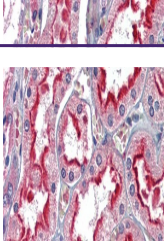
Human

Conjugation

Unconjugated

Tested

ELISA, IHC, WB

Applications


orb1246654
(0.5 ug/ml)
staining of
Daudi...

Immunogen

The immunogen for this antibody is: C-DEHSQDLSGRLR

Target

APOBEC3G

Preservatives

Supplied at 0.5 mg/ml in Tris saline, 0.02% sodium azide, pH 7.3 with 0.5% bovine serum albumin. Aliquot and store at -20°C. Minimize freezing and thawing.

Form/Appearance

Liquid

Concentration

500 ug/mL

Storage

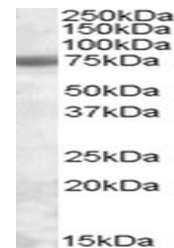
Aliquot and store at -20°C. Minimize freezing and thawing.

Note

For research use only

Application notes

Peptide ELISA: antibody detection limit dilution 1:16000. Western Blot: Approx. 45kDa band observed in lysates of cell line Daudi (calculated MW of 46.4kDa according to NP_068594.1). Recommended concentration: 0.5-1.5ug/ml. Primary incubation was 1 hour. Immunohistochemistry: Paraffin embedded Human Testis and Kidney. Recommended concentration: 2.5ug/ml.



orb1246654
(2.5 ug/ml)
staining of
paraf...


Clonality

Polyclonal

Uniprot ID
[Q9HC16](#)
NCBI
[NP_068594.1](#)
Dilution Range

Peptide ELISA: antibody detection limit dilution 1:16000. Western Blot: Approx. 45kDa band observed in lysates of cell line Daudi (calculated MW of 46.4kDa according to NP_068594.1). Recommended concentration: 0.5-1.5ug/ml. Primary incubation was 1 hour. Immunohistochemistry: Paraffin embedded Human Testis and Kidney. Recommended concentration: 2.5ug/ml.

orb1246654
(2.5 ug/ml)
staining of
paraf...

Expiration Date

12 months from date of receipt.