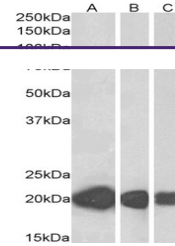

Product Datasheet

GABRB3 Antibody (orb1246611)

Description	GABRB3 Antibody
Species/Host	Goat
Reactivity	Human
Conjugation	Unconjugated
Tested Applications	ELISA, IHC
Immunogen	The immunogen for this antibody is: C-EKTAKAKNDRSK
Target	GABRB3
Preservatives	Supplied at 0.5 mg/ml in Tris saline, 0.02% sodium azide, pH 7.3 with 0.5% bovine serum albumin. Aliquot and store at -20°C. Minimize freezing and thawing.
Form/Appearance	Liquid
Concentration	500 ug/mL
Storage	Aliquot and store at -20°C. Minimize freezing and thawing.
Note	For research use only
Application notes	Peptide ELISA: antibody detection limit dilution 1:8000. Western Blot: Preliminary experiments in Human Brain (Cerebral Cortex, Frontal Cortex and Cerebellum) lysates gave no specific signal but low background (at antibody concentration up to 1ug/ml). We would appreciate any feedback from people in the field - have any results been reported with other antibodies/lysates? Immunohistochemistry: In paraffin embedded Human Cortex shows patchy staining near or at the neuronal cell membrane.. Recommended concentration, 2-4ug/ml.
Clonality	Polyclonal
Uniprot ID	P28472
NCBI	NP_000805.1 , NP_068712.1
Dilution Range	Peptide ELISA: antibody detection limit dilution 1:8000. Western Blot: Preliminary experiments in Human Brain (Cerebral Cortex, Frontal Cortex and Cerebellum) lysates gave no specific signal but low background (at antibody concentration up to 1ug/ml). We would appreciate any feedback from people in the field - have any results been reported with other antibodies/lysates? Immunohistochemistry: In paraffin embedded Human Cortex shows patchy staining near or at the neuronal cell membrane.. Recommended concentration, 2-4ug/ml.



orb1246611
(2.5 ug/ml)
staining of
paraf...