

---

## Product Datasheet

### CSRP3 Antibody (orb1246610)

**Description**

CSR3 Antibody

**Species/Host**

Goat

**Reactivity**

Human, Mouse, Rat

**Conjugation**

Unconjugated

**Tested**

ELISA, IHC, WB

**Applications**
**Immunogen**

The immunogen for this antibody is: CGKSLESTNVTDKD

**Target**

CSR3

**Preservatives**

Supplied at 0.5 mg/ml in Tris saline, 0.02% sodium azide, pH 7.3 with 0.5% bovine serum albumin. Aliquot and store at -20°C. Minimize freezing and thawing.

**Form/Appearance**

Liquid

**Concentration**

500 ug/mL

**Storage**

Aliquot and store at -20°C. Minimize freezing and thawing.

**Note**

For research use only

**Application notes**

Peptide ELISA: antibody detection limit dilution 1:32000. Western Blot: Approx. 20kDa band observed in Human, Mouse and Rat Heart lysates (calculated MW of 21.0kDa according to Human NP\_003467.1 and 20.8kDa according to Rat NP\_476485.1). Recommended concentration: 0.01-0.03ug/ml. Primary incubation was 1 hour. Immunohistochemistry: Paraffin embedded Human Skeletal Muscle and Heart. Recommended concentration: 2.5ug/ml.

**Clonality**

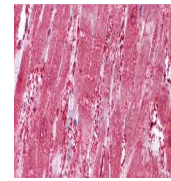
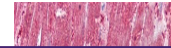
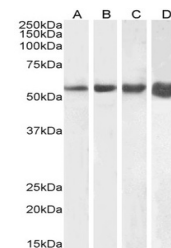
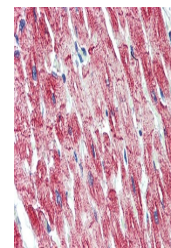
Polyclonal

**Uniprot ID**
[P50461](#)
**NCBI**
[NP\\_003467.1](#)
**Dilution Range**

Peptide ELISA: antibody detection limit dilution 1:32000. Western Blot: Approx. 20kDa band observed in Human, Mouse and Rat Heart lysates (calculated MW of 21.0kDa according to Human NP\_003467.1 and 20.8kDa according to Rat NP\_476485.1). Recommended concentration: 0.01-0.03ug/ml. Primary incubation was 1 hour. Immunohistochemistry: Paraffin embedded Human Skeletal Muscle and Heart. Recommended concentration: 2.5ug/ml.

**Expiration Date**

12 months from date of receipt.


 orb1246610  
(0.01 ug/ml)  
staining of  
Huma...

 orb1246610  
(2.5 ug/ml)  
staining of  
paraf...

 orb1246610  
(2.5 ug/ml)  
staining of  
paraf...