

---

## Product Datasheet

### ANXA1 Antibody (orb1246601)

**Description**

ANXA1 Antibody

**Species/Host**

Goat

**Reactivity**

Human, Mouse, Porcine, Rat

**Conjugation**

Unconjugated

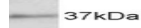
**Tested Applications**

ELISA, WB

**Applications**

 250kDa  
150kDa  
100kDa


 50kDa


 37kDa


 25kDa


 20kDa


 15kDa

 orb1246601  
(1 ug/ml)  
staining of  
K562 (A...

**Immunogen**

The immunogen for this antibody is: CQAILDETKGDYEK

**Target**

ANXA1

**Preservatives**

Supplied at 0.5 mg/ml in Tris saline, 0.02% sodium azide, pH 7.3 with 0.5% bovine serum albumin. Aliquot and store at -20°C. Minimize freezing and thawing.

**Form/Appearance**

Liquid

**Concentration**

500 ug/mL

**Storage**

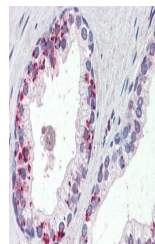
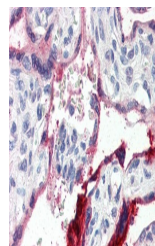
Aliquot and store at -20°C. Minimize freezing and thawing.

**Note**

For research use only

**Application notes**

Peptide ELISA: antibody detection limit dilution 1:4000. Western Blot: Approx 37kDa band observed in lysates of cell lines K562 and NIH3T3 (calculated MW of 38.7kDa according to Human NP\_000691.1 and Mouse NP\_034860.2). Approx 37kDa band observed in Rat and Pig Spleen lysates (calculated MW of 38.7kDa according to Pig NP\_001157470.1). Recommended concentration: 1-3ug/ml.


 orb1246601  
(1 ug/ml)  
staining of  
Rat Spl...

 orb1246601  
(1 ug/ml)  
staining of  
Pig Spl...

**Clonality**

Polyclonal

**Uniprot ID**
[P04083](#)
**NCBI**
[NP\\_000691.1](#)
**Dilution Range**

Peptide ELISA: antibody detection limit dilution 1:4000. Western Blot: Approx 37kDa band observed in lysates of cell lines K562 and NIH3T3 (calculated MW of 38.7kDa according to Human NP\_000691.1 and Mouse NP\_034860.2). Approx 37kDa band observed in Rat and Pig Spleen lysates (calculated MW of 38.7kDa according to Pig NP\_001157470.1). Recommended concentration: 1-3ug/ml.

**Expiration Date**

12 months from date of receipt.