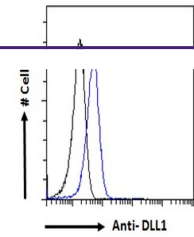
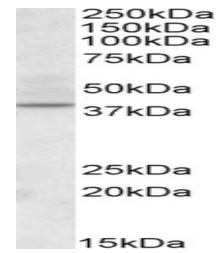

Product Datasheet

DLL1 Antibody (orb1246415)

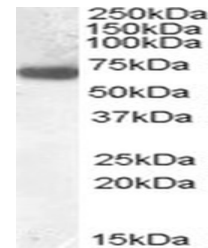
Description	DLL1 Antibody
Species/Host	Goat
Reactivity	Human, Mouse, Rat
Conjugation	Unconjugated
Tested Applications	ELISA, FC, IF, WB
Immunogen	The immunogen for this antibody is: C-ATQRHLTVGEEWSQD
Target	DLL1
Preservatives	Supplied at 0.5 mg/ml in Tris saline, 0.02% sodium azide, pH 7.3 with 0.5% bovine serum albumin. Aliquot and store at -20°C. Minimize freezing and thawing.
Form/Appearance	Liquid
Concentration	500 ug/mL
Storage	Aliquot and store at -20°C. Minimize freezing and thawing.
Note	For research use only
Application notes	Peptide ELISA: antibody detection limit dilution 1:16000. Western Blot: Approx 75kDa band observed in Mouse Heart and Rat Pancreas lysates (calculated MW of 78.5kDa according to Mouse NP_031891.2 and 77.4kDa according to Rat NP_114452.1). An additional band of nknown identity was also consistently observed at 25kDa. This band was successfully blocked by incubation with the immunizing peptide. Recommended concentration: 0.3-7ug/ml. Primary incubation 1 hour at room temperature. Immunofluorescence: Strong expression of the protein seen in the cytoplasm/ membranes of HeLa cells. Recommended concentration: 10ug/ml. Flow Cytometry: Flow cytometric analysis of HeLa cells. Recommended concentration: 10ug/ml.
Clonality	Polyclonal
Uniprot ID	O00548
NCBI	NP_005609.3
Dilution Range	Peptide ELISA: antibody detection limit dilution 1:16000. Western Blot: Approx 75kDa band observed in Mouse Heart and Rat Pancreas lysates (calculated MW of 78.5kDa according to Mouse NP_031891.2 and 77.4kDa according to Rat NP_114452.1). An additional band of nknown identity was also consistently observed at 25kDa.



orb1246415 (2 ug/ml) staining of Rat Pan...



orb1246415 Immunofluorescence analysis o...



orb1246415 Flow cytometric analysis of p...