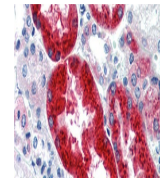

Product Datasheet

EYA1 Antibody (orb1246335)

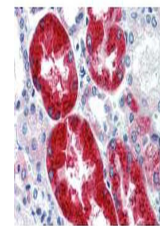
Description	EYA1 Antibody
Species/Host	Rabbit
Reactivity	Human, Mouse, Rat
Conjugation	Unconjugated
Tested Applications	ELISA, IHC, WB
Immunogen	Antibody produced in rabbits immunized with a synthetic peptide corresponding a region of human EYA1.
Target	EYA1
Preservatives	Purified antibody supplied in 1x PBS buffer with 0.09% (w/v) sodium azide and 2% sucrose.
Form/Appearance	Liquid
Concentration	batch dependent
Storage	For short periods of storage (days) store at 4°C. For longer periods of storage, store EYA1 antibody at -20°C. As with any antibody avoid repeat freeze-thaw cycles.
Note	For research use only
Application notes	EYA1 antibody can be used for detection of EYA1 by ELISA at 1:312500. EYA1 antibody can be used for detection of EYA1 by western blot at 1 µg/mL, and HRP conjugated secondary antibody should be diluted 1:50,000 - 100,000. EYA1 antibody can be used for detection of EYA1 by IHC starting at 5 ug/ml.
Clonality	Polyclonal
MW	61 kDa
Uniprot ID	Q99502
NCBI	NP_742057
Dilution Range	EYA1 antibody can be used for detection of EYA1 by ELISA at 1:312500. EYA1 antibody can be used for detection of EYA1 by western blot at 1 µg/mL, and HRP conjugated secondary antibody should be diluted 1:50,000 - 100,000. EYA1 antibody can be used for detection of EYA1 by IHC starting at 5 ug/ml.
Expiration Date	12 months from date of receipt.



Antibody used in IHC on Human kidney at ...



Antibody used in WB on Human brain at 0....



Antibody used in IHC on Human kidney at ...