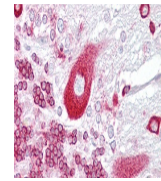

Product Datasheet

PURA Antibody (orb1246278)

Description	PURA Antibody
Species/Host	Rabbit
Reactivity	Human, Mouse, Rat
Conjugation	Unconjugated
Tested Applications	ELISA, WB
Immunogen	Antibody produced in rabbits immunized with a synthetic peptide corresponding a region of human PURA.
Target	PURA
Preservatives	Purified antibody supplied in 1x PBS buffer with 0.09% (w/v) sodium azide and 2% sucrose.
Form/Appearance	Liquid
Concentration	batch dependent
Storage	For short periods of storage (days) store at 4°C. For longer periods of storage, store PURA antibody at -20°C. As with any antibody avoid repeat freeze-thaw cycles.
Note	For research use only
Application notes	PURA antibody can be used for detection of PURA by ELISA at 1:62500. PURA antibody can be used for detection of PURA by western blot at 1 µg/mL, and HRP conjugated secondary antibody should be diluted 1:50,000 - 100,000.
Clonality	Polyclonal
MW	35 kDa
Uniprot ID	Q00577
NCBI	NP_005850
Dilution Range	PURA antibody can be used for detection of PURA by ELISA at 1:62500. PURA antibody can be used for detection of PURA by western blot at 1 µg/mL, and HRP conjugated secondary antibody should be diluted 1:50,000 - 100,000.
Expiration Date	12 months from date of receipt.



Antibody used in IHC on Human Cerebellum...



Antibody used in WB on Human MCF7 cells ...