
Product Datasheet

KCNJ12 Antibody (orb1246148)

Description

KCNJ12 Antibody

Species/Host

Rabbit

Reactivity

Human, Mouse, Rat

Conjugation

Unconjugated

Tested

ELISA, WB

Applications

Antibody produced in rabbits immunized with a synthetic peptide corresponding a region of human KCNJ12.

Immunogen
Target

KCNJ12

Preservatives

Purified antibody supplied in 1x PBS buffer with 0.09% (w/v) sodium azide and 2% sucrose.

Form/Appearance

Liquid

Concentration

batch dependent

Storage

For short periods of storage (days) store at 4°C. For longer periods of storage, store KCNJ12 antibody at -20°C. As with any antibody avoid repeat freeze-thaw cycles.

Note

For research use only

Application notes

KCNJ12 antibody can be used for detection of KCNJ12 by ELISA at 1:62500. KCNJ12 antibody can be used for detection of KCNJ12 by western blot at 1 µg/mL, and HRP conjugated secondary antibody should be diluted 1:50,000 - 100,000.

Clonality

Polyclonal

MW

49 kDa

Uniprot ID
[Q14500](#)
NCBI
[NP_066292](#)
Dilution Range

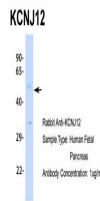
KCNJ12 antibody can be used for detection of KCNJ12 by ELISA at 1:62500. KCNJ12 antibody can be used for detection of KCNJ12 by western blot at 1 µg/mL, and HRP conjugated secondary antibody should be diluted 1:50,000 - 100,000.

Expiration Date

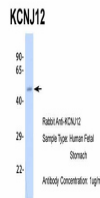
12 months from date of receipt.



Antibody used in WB on Human Brain at 0....



Antibody used in WB on Hum. Fetal Pancre...



Antibody used in WB on Hum. Fetal Stomac...