
Product Datasheet

ZNF165 Antibody (orb1246122)

Description

ZNF165 Antibody


Species/Host

Rabbit

Reactivity

Human

Conjugation

Unconjugated

Tested

ELISA, WB

Applications

Antibody used in IHC on Human Placenta a...

Immunogen

Antibody produced in rabbits immunized with a synthetic peptide corresponding a region of human ZNF165.

Target

ZNF165

Preservatives

Purified antibody supplied in 1x PBS buffer with 0.09% (w/v) sodium azide and 2% sucrose.

Form/Appearance

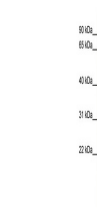
Liquid

Concentration

batch dependent

Storage

For short periods of storage (days) store at 4°C. For longer periods of storage, store ZNF165 antibody at -20°C. As with any antibody avoid repeat freeze-thaw cycles.



Antibody used in WB on Human HeLa at 0.2...

Note

For research use only

Application notes

ZNF165 antibody can be used for detection of ZNF165 by ELISA at 1:12500. ZNF165 antibody can be used for detection of ZNF165 by western blot at 1 μg/mL, and HRP conjugated secondary antibody should be diluted 1:50,000 - 100,000.

Clonality

Polyclonal

MW

56 kDa

Uniprot ID
[P49910](#)
NCBI
[NP_003438](#)
Dilution Range

ZNF165 antibody can be used for detection of ZNF165 by ELISA at 1:12500. ZNF165 antibody can be used for detection of ZNF165 by western blot at 1 μg/mL, and HRP conjugated secondary antibody should be diluted 1:50,000 - 100,000.

Expiration Date

12 months from date of receipt.