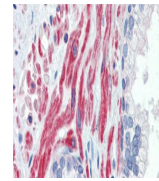

Product Datasheet

SSX4 Antibody (orb1246119)

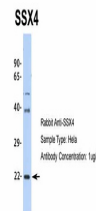
Description	SSX4 Antibody
Species/Host	Rabbit
Reactivity	Human
Conjugation	Unconjugated
Tested Applications	ELISA, WB
Immunogen	Antibody produced in rabbits immunized with a synthetic peptide corresponding a region of human SSX4.
Target	SSX4
Preservatives	Purified antibody supplied in 1x PBS buffer with 0.09% (w/v) sodium azide and 2% sucrose.
Form/Appearance	Liquid
Concentration	batch dependent
Storage	For short periods of storage (days) store at 4°C. For longer periods of storage, store SSX4 antibody at -20°C. As with any antibody avoid repeat freeze-thaw cycles.
Note	For research use only
Application notes	SSX4 antibody can be used for detection of SSX4 by ELISA at 1:312500. SSX4 antibody can be used for detection of SSX4 by western blot at 1 µg/mL, and HRP conjugated secondary antibody should be diluted 1:50,000 - 100,000.
Clonality	Polyclonal
MW	22 kDa
Uniprot ID	O60224
NCBI	NP_005627
Dilution Range	SSX4 antibody can be used for detection of SSX4 by ELISA at 1:312500. SSX4 antibody can be used for detection of SSX4 by western blot at 1 µg/mL, and HRP conjugated secondary antibody should be diluted 1:50,000 - 100,000.
Expiration Date	12 months from date of receipt.



Antibody used in IHC on Human Prostate a...



Antibody used in WB on Human HepG2 at 0....



Antibody used in WB on Human HeLa at 1 u...