
Product Datasheet

VEZF1 Antibody (orb1246111)

Description

VEZF1 Antibody

Species/Host

Rabbit

Reactivity


Human, Mouse, Rat

Conjugation

Unconjugated

Tested

ELISA, WB

Applications


Antibody used in WB on Human 293T at 1 u...

Immunogen

Antibody produced in rabbits immunized with a synthetic peptide corresponding a region of human VEZF1.

Target

VEZF1

Preservatives

Purified antibody supplied in 1x PBS buffer with 0.09% (w/v) sodium azide and 2% sucrose.

Form/Appearance

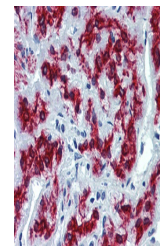
Liquid

Concentration

batch dependent

Storage

For short periods of storage (days) store at 4°C. For longer periods of storage, store VEZF1 antibody at -20°C. As with any antibody avoid repeat freeze-thaw cycles.



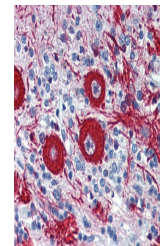
Antibody used in IHC on Human Brain.

Note

For research use only

Application notes

VEZF1 antibody can be used for detection of VEZF1 by ELISA at 1:312500. VEZF1 antibody can be used for detection of VEZF1 by western blot at 1 µg/mL, and HRP conjugated secondary antibody should be diluted 1:50,000 - 100,000.



Antibody used in IHC on Human Brain at 5...

Clonality

Polyclonal

MW

57 kDa

Uniprot ID
[Q14119](https://www.uniprot.org/entry/Q14119)
NCBI
[NP_009077](https://www.ncbi.nlm.nih.gov/nuccore/NP_009077)
Dilution Range

VEZF1 antibody can be used for detection of VEZF1 by ELISA at 1:312500. VEZF1 antibody can be used for detection of VEZF1 by western blot at 1 µg/mL, and HRP conjugated secondary antibody should be diluted 1:50,000 - 100,000.

Expiration Date

12 months from date of receipt.