
Product Datasheet

NR1I2 Antibody (orb1246090)

Description

NR112 Antibody


Species/Host

Rabbit

Reactivity

Human

Conjugation

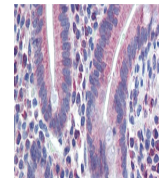
Unconjugated

Tested Applications

ELISA, WB

Immunogen

Antibody produced in rabbits immunized with a synthetic peptide corresponding to a region of human NR112.



Antibody used in IHC on Human Small Inte...

Target

NR112

Preservatives

Purified antibody supplied in 1x PBS buffer with 0.09% (w/v) sodium azide and 2% sucrose.

Form/Appearance

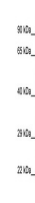
Liquid

Concentration

batch dependent

Storage

For short periods of storage (days) store at 4°C. For longer periods of storage, store NR112 antibody at -20°C. As with any antibody avoid repeat freeze-thaw cycles.



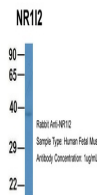
Antibody used in WB on Human HeLa at 0.2...

Note

For research use only

Application notes

NR112 antibody can be used for detection of NR112 by ELISA at 1:1562500. NR112 antibody can be used for detection of NR112 by western blot at 1 µg/mL, and HRP conjugated secondary antibody should be diluted 1:50,000 - 100,000.



Antibody used in WB on Hum. Fetal Muscle...

Clonality

Polyclonal

MW

50 kDa

Uniprot ID
[O75469](https://www.uniprot.org/entry/O75469)
NCBI
[NP_003880](https://www.ncbi.nlm.nih.gov/nuccore/NP_003880)
Dilution Range

NR112 antibody can be used for detection of NR112 by ELISA at 1:1562500. NR112 antibody can be used for detection of NR112 by western blot at 1 µg/mL, and HRP conjugated secondary antibody should be diluted 1:50,000 - 100,000.

Expiration Date

12 months from date of receipt.